

2023 H2 EN

PRODUCT BROCHURE

IP Surveillance Solutions



VIVOTEK

A Delta Group Company

MELINT, distributeur officiel **VIVOTEK**

Corporate

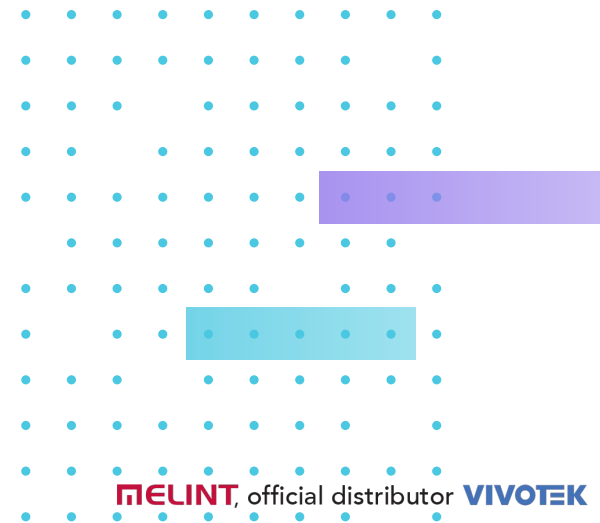
Making Society's Most Trusted Intelligent Surveillance Systems.

VIVOTEK

A Delta Group Company

As one of the world's most trusted IP surveillance solutions provider, we deliver intelligent security, control, and management for a safer society.

Founded in Taiwan in 2000, we are widely recognized for our expansive technical capabilities in imaging and audio, specializing in IP cameras, video management software, and edge based AI video analytics. In 2017, we joined the Delta Group, a global leader in power and thermal management solutions, to serve as the security and intelligence core of Delta Building Automation Business.



Global Presence

Via a global network of more than 200 distributors in more than 100 countries, we serve system integrators building intelligent solutions for end-users around the world. VIVOTEK Inc. (TAIEX: 3454) was listed on the TWSE in 2011, and we have established offices in the U.S., Netherlands, India, Mexico, and Japan.

We Get The Picture

With more than 20 years at the forefront of the industry, we've driven breakthroughs in R&D, and built a solid technological foundation for the industry. It's based on these two decades of experience that we have the expertise to know what keeps business owners and security operators up at night.

Smarter Is Safer

Our AI-powered video analytics deliver improved overviews and real-time insights, giving security operators the information they need, when they need it, to ensure safe and secure operations. With intelligent technologies integrated into our surveillance solutions, users have the peace of mind that their sensitive information is secured against prying eyes.

Trusted Quality

Choosing VIVOTEK means choosing quality you can trust. We develop, test, and manufacture our industry leading products, technologies, and solutions in-house, meeting the highest international standards and regulations for quality management and environmental responsibility.

Seamless Integration, Meaningful Connection

The most robust and effective solutions for keeping people, assets, and data safe require many varied technologies to work seamlessly together. Our innovative surveillance solutions unlock new possibilities for a wide range of vertical applications, leveraging our two decades of industry expertise and global strategic partnerships.



Contents

Advanced Technology

| | |
|------------------------|---|
| Smart Stream III | 5 |
| SNV II | 5 |
| Smart IR III | 6 |
| Smart IR II..... | 6 |
| Camera Link | 6 |

Installation Aids

| | |
|---------------------------------|---|
| Modular Mechanical Design | 7 |
| Wi-Fi Installation | 8 |

Security within Security

| | |
|---|----|
| Security at the Edge | 9 |
| Cybersecurity Management Solution | 10 |
| Multi-Layered Protection for Surveillance Cameras | 11 |

AI-Based Analytics

| | |
|-----------------------------------|----|
| Smart Motion Detection | 13 |
| Smart VCA..... | 13 |
| Smart Tracking Advanced..... | 14 |
| Parking Violation Detection | 14 |
| Restricted Zone Detection..... | 14 |

Deep Search

| | |
|-----------------------|----|
| Attribute Search..... | 16 |
| Scene Search..... | 16 |
| Re-Search..... | 16 |

Network Cameras

| | |
|------------------|----|
| Naming Rule..... | 18 |
|------------------|----|

SUPREME Series

| | |
|----------------------------|----|
| 4K Cameras | 21 |
| 2MP Cameras | 23 |
| 360° Fisheye Cameras..... | 25 |
| Multi-Sensor Cameras | 27 |

VERSATILE Series

| | |
|--------------------------------|----|
| 5MP 87-A-Series Cameras | 31 |
| 5MP 89-v2-Series Cameras | 33 |
| 2MP Cameras | 35 |
| Box Cameras..... | 37 |
| Speed Dome Cameras..... | 39 |
| Specialty Cameras | 41 |

COMPETITIVE Series

| | |
|-------------------------|----|
| Standard Cameras..... | 45 |
| Panoramic Cameras | 49 |

Application Specific Solutions

| | |
|-------------------------------|----|
| Thermal Bullet Cameras | 53 |
| Correctional Facilities | 55 |
| Counting Solution | 57 |
| Facial Recognition..... | 59 |
| Network Audio..... | 69 |
| Media Converters | 71 |

Network Video Recorders

| | |
|----------------------|----|
| Naming Rule..... | 74 |
| Core+ AI | 75 |
| Desktop NVR..... | 77 |
| Rack Mount NVR | 79 |

PoE Network Products

| | |
|--------------------------|----|
| Commercial Series..... | 83 |
| Industrial Series..... | 85 |
| Long Range Solution..... | 86 |
| Outdoor Series..... | 86 |
| PoE Accessories | 87 |

Video Management Software

| | |
|-----------------------------|----|
| VAST Security Station | 90 |
|-----------------------------|----|

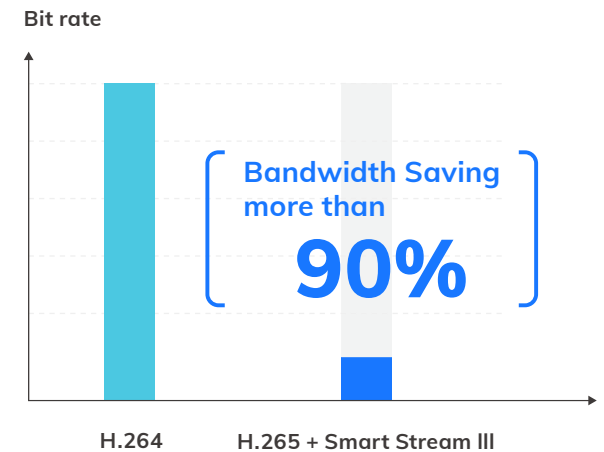
Solution Integration Alliance

| | |
|----------|----|
| SIA..... | 93 |
|----------|----|

Advanced Technology

Smart Stream III

VIVOTEK Smart Stream III combines Smart Codec, Dynamic Intra Frame Period, Scene Awareness and Smart FPS technologies to enable the cameras to optimize quality for desired regions and automatically adjust encoding, maximizing bandwidth usage efficiency and lowering storage requirements while maintaining high image quality.



SNV II

SNV stands for Supreme Night Visibility. VIVOTEK SNV II-label products incorporate carefully selected quality optical components and sophisticated image signal processing algorithms to reproduce high quality color images, even in very low-light conditions.



Smart IR III

AI-Based

Deep learning Adaptive IR illuminators based on objects of interest to achieve best evidence capture.

Object of Interest

- People
- Vehicles

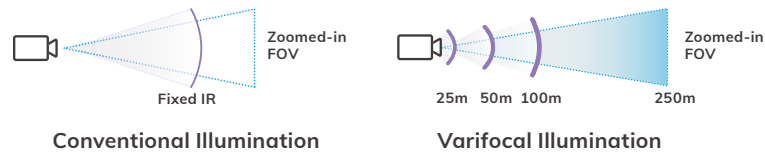


Smart IR II

Vari-Angle IR

Automatic IR angle adjustment to the optical zoom provides consistent IR images in all fields of view.

- Effortless IR angle adjustment
- Wide coverage field of view
- No IR hot spots
- Long-range IR illumination



Camera Link

Inter-camera communication to capture more details.

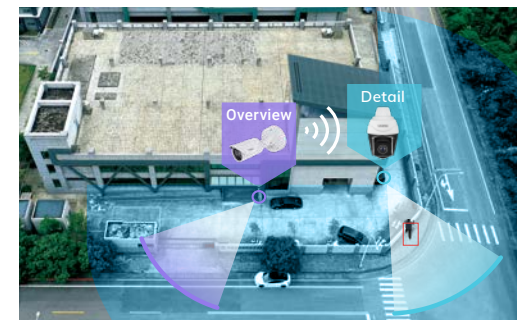
- Spotter camera detects activity at a pre-set location
- Alerts PTZ cameras to zoom onto pre-set location
- PTZ cameras capture clearer details



IB9367-EHT-v2
Wide Angle for overview
(Spotter)



SD9384-EHL
PTZ for Detail
(Go to preset location and track event)



[BACK TO CONTENTS](#)

Technologies

Installation Aids

Various Helpful Features to Simplify the Installation Process

Installation-friendly

Modular Mechanical Design

VIVOTEK's brand new mechanical design has made the installation process easier than ever before. The new modular design greatly reduces installation times and costs, allowing installers to take on more projects.

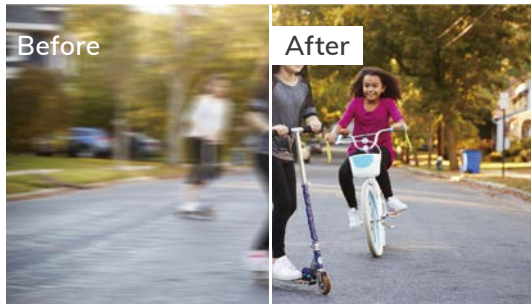


Wi-Fi Installation

USB Adapter
+
Wi-Fi Dongle

iViewer

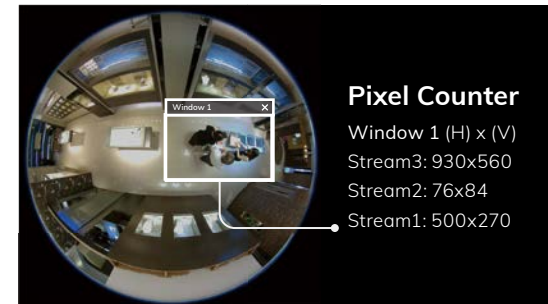
Direct Network Access for Installation via USB Wi-Fi Adapter
*Available on selected models



Speed Focus
for clearer images around the clock



Automatic IR Angle Adjustment
for best possible IR image

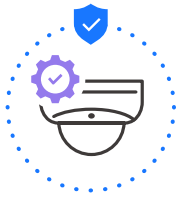


Visual Pixel Calculator
to achieve operational requirements
* Available on selected models

Technologies

Security within Security

Security at the Edge



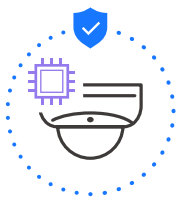
Secure Boot

Secure boot is a mechanism that protects the firmware of the product installed by VIVOTEK. During the camera boot up process, secure boot ensures that unauthenticated code is rejected and protects the camera system from attacks or infections by malicious external code.



Secure Console

On the basis of secure boot, we updated the remote access security mechanism and disabled the console of the camera from the SSH and SFTP protocol, which defends the vulnerability of the system. Permission from VIVOTEK with key based authentication is the only way to access, providing a safer connection for the surveillance system.



Signed Firmware

VIVOTEK's signed firmware requires a digital signature in the firmware and verification of the signature by VIVOTEK, thereby ensuring that users can trust the firmware has not been tampered with. A device with signed firmware can validate the firmware before allowing installation.

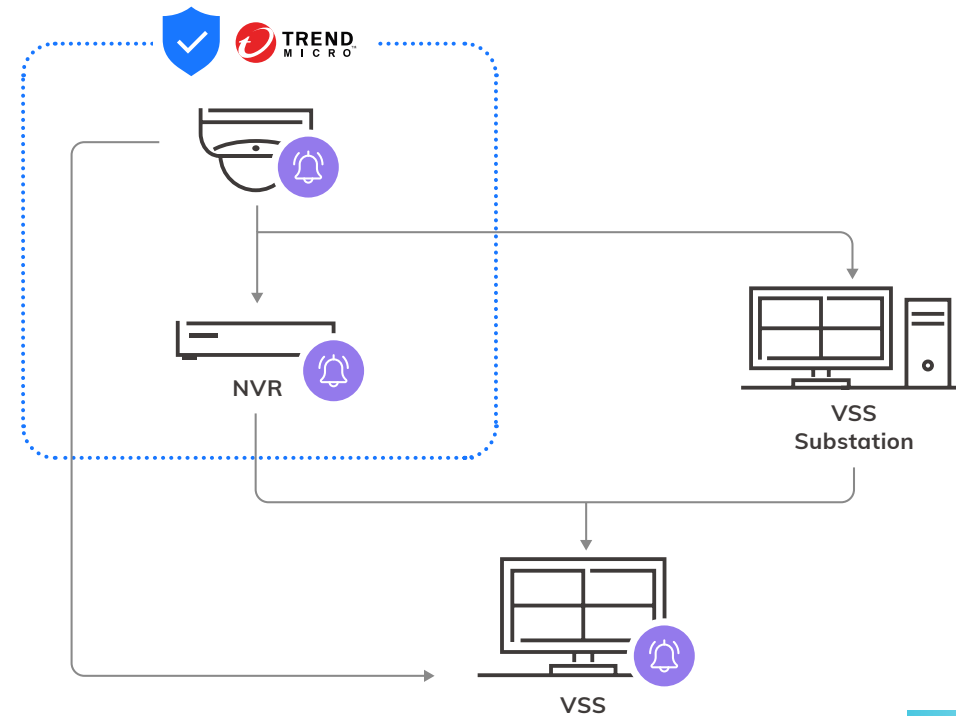


Secure VADP

VIVOTEK Application Development Platform (VADP) provides an open platform that enables developers to add on features for specific scenarios or applications with VIVOTEK cameras. Securing the VADP with enhanced security is critical. Applying Secure VADP with digital signature and encryption capabilities makes it safer and more reliable for third-party integration.

Cybersecurity Management Solution

VIVOTEK's cybersecurity assurance efforts are built into the lifecycle of our products, including development, verification, manufacturing, delivery and service. We are constantly evaluating and enhancing our cybersecurity efforts in order to provide our valued customers with the highest quality and most reliable products. By cooperating with the world-renowned cybersecurity company, Trend Micro, and announcing the hardening procedure to users, VIVOTEK is committed to helping minimize and stopping such events from affecting our customers and products.



Multi-Layered Protection for Surveillance Cameras



Multi-Layered Protection with Trend Micro IoT Security

Multi-Layered Protection including Brute Force Attack Detection, Intrusion Detection and Prevention, and Instant Damage Control will automatically secure your network system with the latest signature upgrades.



Cybersecurity Alarm Management with Instant Alerts

Once event notifications in network cameras and VSS VMS have been set up, VIVOTEK's surveillance solution will be immediately alerted when cyberattacks occur.



Event Reports with Cyber Risk Dashboard

Quickly know attack trend and status, and acquire attack information in order to diagnose your network promptly on VSS and NVRs.

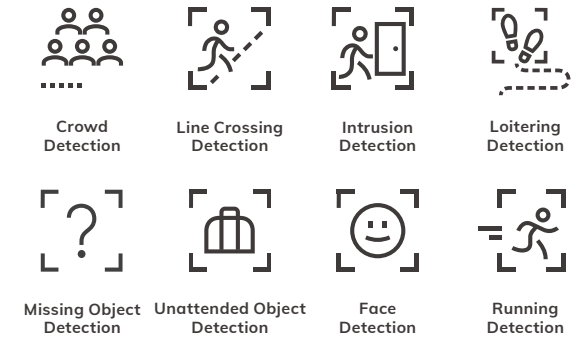


[BACK TO CONTENTS](#) 

Analytics

AI-Based Analytics

Deep Learning Technology



Smart Motion
Detection

Smart Motion Detection

Recognize human activities with precision, with no negative impact from changes in lighting, shadows, adverse weather, or other factors. Smart Motion Detection greatly reduces the amount of false alarms, and provides continued intelligent protection of people.



Smart VCA

Smart VCA

The on-board Smart Video Content Analytics (VCA) suite includes 8 advanced video analytics, providing smart-edge cameras with the ability for advanced accuracy in people and object detection. It is easily configurable to meet diverse user application requirements.

- Crowd Detection
- Line Crossing Detection
- Intrusion Detection
- Loitering Detection
- Missing Object Detection
- Unattended Object Detection
- Face Detection
- Running Detection

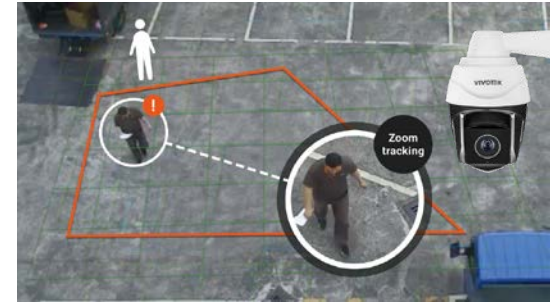


Smart Tracking
Advanced

Smart Tracking Advanced

Smart Tracking Advanced is an innovative Deep Learning Technology for VIVOTEK's new PTZ cameras designed to increase effectiveness when automatically tracking people in motion. It is especially effective for applications and situations in which individuals require special attention, such as bank vaults, or parking facilities after working hours.

- Line Crossing Detection
- Intrusion Detection
- Loitering Detection
- Face Detection

Parking Violation
Detection

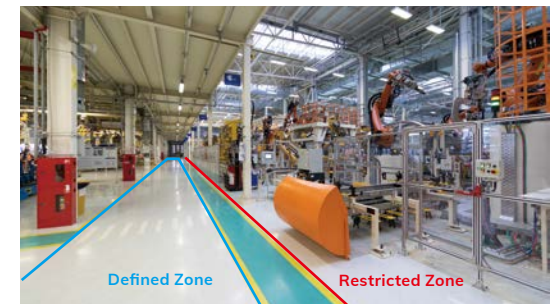
Parking Violation Detection

Parking Violation Detection can detect when vehicles stop inside a restricted area. Application scenarios include cars parking in restricted areas at the airport, bus & train stations, and bicycle lanes. Reduce traffic congestion through detecting illegally parked vehicles.

Restricted Zone
Detection

Restricted Zone Detection

Restricted Zone Detection ensures that people follow guidelines and rules in order to comply with safety procedures. Places such as laboratories, food processing, or construction zones often require equipment checks before entry. Restricted Zone Detection ensures that people follow the right procedure for entering these facilities.



[BACK TO CONTENTS](#)

Search

Deep Search

Powerful and Efficient Evidence Search with AI

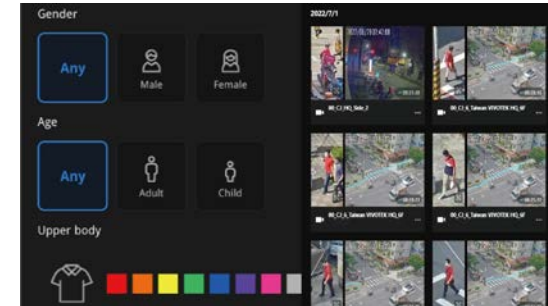


Deep Search is an AI-based post-event search functionality, featuring **Attribute Search**, **Scene Search**, and **Re-Search**. By accessing the metadata provided by VIVOTEK cameras with Vision Object Analytics, users no longer have to scroll through the video footage frame by frame. Factoring in multiple attributes and rules makes post-event search faster and easier. Available in VSS and new Core+ AI NVR's.



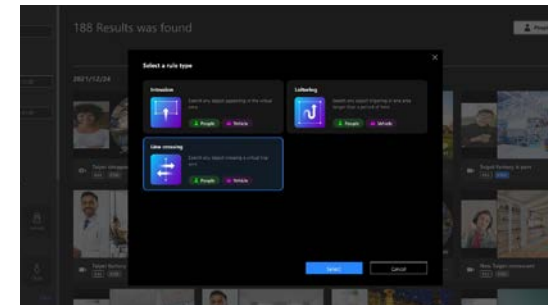
Attribute Search

Use specific attributes (e.g. gender, age group, clothing/vehicle color, vehicle type, etc.) to quickly and accurately search for people or vehicles. With **Attribute Search**, users can narrow down their search parameters to specific factors, such as red motorcycle or blue shirt female.



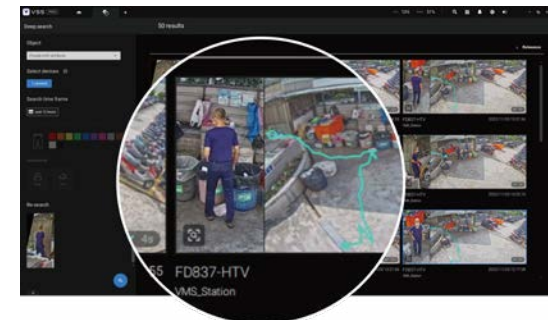
Scene Search

Scene Search allows users to quickly review camera footage by using intrusion, line crossing, or loitering detection on the recorded video. For example using intrusion detection, users can draw a box at a point of interest and select a time period to quickly find results of all events where someone, or vehicle, entered that region.



Re-Search

After finding a person of interest on one camera, users can use that image to search for them again (**Re-Search**) across all other cameras in the entire surveillance system. This helps users identify and track all the activities of this person of interest throughout the property. Only available on VSS Pro.



[BACK TO CONTENTS](#)

Network Cameras



Network Camera Naming Rule

| | | | | | | | | |
|-------------------|-----------------|-----------------|-----------------|-----------------|---|-----------------|---|-----------------|
| FD | 9 | 1 | 6 | 7 | - | HT | - | v2 |
| 1-2 nd | 3 rd | 4 th | 5 th | 6 th | | 7 th | | 8 th |

Network Camera Model

| 1-2 nd Model Category | |
|----------------------------------|----------------------------------|
| Code | Description |
| CC | Compact Cube Camera |
| CD | Corner Camera |
| CU | Camera Unit |
| FD | Fixed Dome Camera |
| FE | Fisheye Camera |
| IB | Bullet Camera |
| IP | Box Camera |
| IT | Turret Dome Camera |
| IZ | Zoom Lens Camera |
| MA | Multiple Adjustable Views Camera |
| MD | Mobile Dome Camera |
| MS | Multiple Sensor Camera |
| SC | Smart Counter |
| SD | Speed Dome Camera |
| TB | Thermal Bullet Camera |
| VC | Video Core |
| VS | Video Server |

| 3 rd A/V Type | |
|--------------------------|-----------------------|
| NO. | Description |
| 8 | H.264 / MJPEG |
| 9 | H.265 / H.264 / MJPEG |

| 4 th VC Series - Amount of Channel | |
|---|---------------|
| NO. | Description |
| 1 - 9 | 1 - 9 Channel |

| 4 th IP Camera Type | |
|--------------------------------|-------------------|
| NO. | Description |
| 1 | Indoor IP Camera |
| 3 | Outdoor IP Camera |
| 5 | Mobile Certified |

| 5 th IP Camera - Resolution | |
|--|---------------------|
| NO. | Description |
| 1 | ≥ 10MP CMOS Sensor |
| 2 | ≥ 20MP CMOS Sensor |
| 3 | ≥ 30MP CMOS Sensor |
| 4 | ≥ 40MP CMOS Sensor |
| 5 | ≥ 50MP CMOS Sensor |
| 6 | ≥ 2.0MP CMOS Sensor |
| 7 | ≥ 3.0MP CMOS Sensor |
| 8 | ≥ 5.0MP CMOS Sensor |
| 9 | ≥ 8.0MP CMOS Sensor |

| 6 th Running Number | |
|--------------------------------|-------------|
| NO. | Description |
| - | 1 - 99 |

| 7 th Extension / Feature | |
|-------------------------------------|---|
| NO. | Description |
| D | DC Power Input |
| E | Extended Temperature ≤ -40°C |
| H | High Dynamic Range (Wide Dynamic Range) |
| L | Lite |
| LPC | License Plate Capture |
| LPR | Embedded License Plate Recognition Software |
| M | Manual Focal |
| N | 940nm IR LED |
| P | P-iris (Box Cameras) |
| T | Remote Focus i-CS (Box Cameras) |
| V | Outdoor Vandal Proof |

| 8 th Digit Extension | |
|---------------------------------|-------------|
| NO. | Description |
| v | 1 - 99 |
| A | A-Z |
| O | OSSA |

SVC Definition

| S SERIES | |
|--|--|
| SUPREME | |
| Definition | |
| Top of the line, cutting edge technology, superior image quality | |

| V SERIES | |
|--|--|
| VERSATILE | |
| Definition | |
| Advanced and feature rich for most applications, great image quality | |

| C SERIES | |
|--|--|
| COMPETITIVE | |
| Definition | |
| Cost effective professional surveillance, good image quality | |



Network Camera

SUPREME Series

- Top of the line
- Cutting edge technology
- Superior image quality



AI Analytics

Smart VCA included in all S-Series cameras.



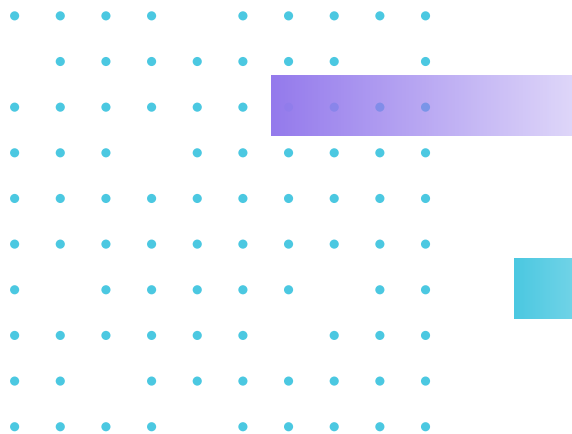
Smart IR III

AI-Based deep learning Adaptive IR illuminators targeting people/ vehicles to achieve best evidence capture.



Detailed Coverage

4K Resolution and Multi-Sensor models for maximum coverage





Network Cameras

SUPREME Series

[BACK TO CONTENTS](#) 

Network Camera

4K Cameras

Maximum Clarity with 91-Series 4K Resolution

4K

Highest Detailed Video

VIVOTEK 4K cameras have the highest pixel density of all our camera products, 4x standard 1080P resolution.

**AI-Powered Video Analytics**

VIVOTEK's Smart VCA is a suite of multiple analytics that provide faster and more accurate detection for various scenarios.

**Smart Motion Detection**

With accurate precision to detect human activity only, while also intelligently ignoring background changes in a given scene, VIVOTEK's SMD greatly minimizes the number of false alarms.

**Significantly Lower Bandwidth via Smart Stream III**

Fully compatible with H.264 and H.265, VIVOTEK's Smart Stream III allows reducing bandwidth consumption by up to 90%.





NEW

FD9391-EHTV-v2



NEW

IB9391-EHTV-v2



IP9191-HT-v2

| 4K Cameras | Outdoor Dome | Bullet | Box |
|-----------------------------------|---|---|---|
| Camera Features | | | |
| Sensor Type | 1/1.8" Progressive CMOS | 1/1.8" Progressive CMOS | 1/1.8" Progressive CMOS |
| Lens Type/ Focal Length/ F-number | Motorized/ 4.4 ~ 10.2 mm / F1.38 ~ F2.24 | Motorized/ 4.4 ~ 10.2 mm / F1.38 ~ F2.24 | Remote Back Focus i-CS/ 3.9 ~ 10 mm/ F1.5 |
| Field of View | 110° ~ 43° (H) 57° ~ 24° (V) | 100° ~ 43° (H) 50° ~ 24° (V) | 119° ~ 46° (H) 63° ~ 26° (V) |
| Day/ Night | • | • | • |
| IR Illuminators | 50 m, IR LED*4 Smart IR III | 50 m, IR LED*4 Smart IR III | - |
| Min. Illumination | 0.02 lux @ F1.38 (Color) <0.005 lux @ F1.38 (B/W) 0 lux with IR illumination on | 0.02 lux @ F1.38 (Color) <0.005 lux @ F1.38 (B/W) 0 lux with IR illumination on | 0.01 lux @ F1.5 (Color) 0.005 lux @ F1.5 (B/W) |
| Max. Resolution/ Frame Rate | 30 fps @ 3840x2160 | 30 fps @ 3840x2160 | 30 fps @ 3840x2160 |
| WDR Technology* | WDR Pro | WDR Pro | WDR Pro |
| On-board Storage | microSD/SDHC/SDXC card slot | microSD/SDHC/SDXC card slot | microSD/SDHC/SDXC card slot |
| Video/ Audio/ Network | | | |
| Video Compression | Triple-Codec (H.265/H.264/MJPEG) | Triple-Codec (H.265/H.264/MJPEG) | Triple-Codec (H.265/H.264/MJPEG) |
| Audio | Two-way Audio (Full duplex) | Two-way Audio (Full duplex) | Two-way Audio (Full duplex) |
| Digital Input/ Output | 2/2 | 3/3 | 2/2 |
| ONVIF | Profile G/S/T | Profile G/S/T | Profile G/S/T |
| Solution Integration | | | |
| Security | Secure Boot, Signed Firmware, Trend Micro IoT Security | Secure Boot, Signed Firmware, Trend Micro IoT Security | Secure Boot, Signed Firmware, Trend Micro IoT Security |
| VCA | Smart Motion Detection, Smart VCA, Vision OA | Smart Motion Detection, Smart VCA, Vision OA | Smart Motion Detection, Smart VCA, Vision OA |
| General | | | |
| Power Input/ Consumption | AC 24V / DC 12V / PoE Max. 25 W | AC 24V/ DC 12V/ PoE Max. 25 W | AC 24V/ DC 12V/ PoE Max. 15 W |
| Housing | IP66, IP67, IK10, NEMA 4X | IP66, IP67, IK10, NEMA 4X | - |
| Dimensions | ø 174 x 123 mm | ø 153 x 283 mm | 155 x 70 x 61 mm (w/o lens) 210 x 70 x 66 mm (w/ lens) |
| Operating Temperature | -50°C ~ 60°C (-58°F ~ 140°F) | -50°C ~ 60°C (-58°F ~ 140°F) | -10°C ~ 60°C (14°F ~ 140°F) |
| NDA Compliance Product | • | • | • |

* All specifications are subject to change without notice.

BACK TO CONTENTS [↑](#)

Network Camera

2MP Cameras

Best 2MP Image Quality with 65-Series



Smart IR III

AI-Based deep learning Adaptive IR illuminators targeting people/vehicles to achieve best evidence capture.



AI-Powered Video Analytics

VIVOTEK's Smart VCA is a suite of multiple analytics that provide faster and more accurate detection for various scenarios.



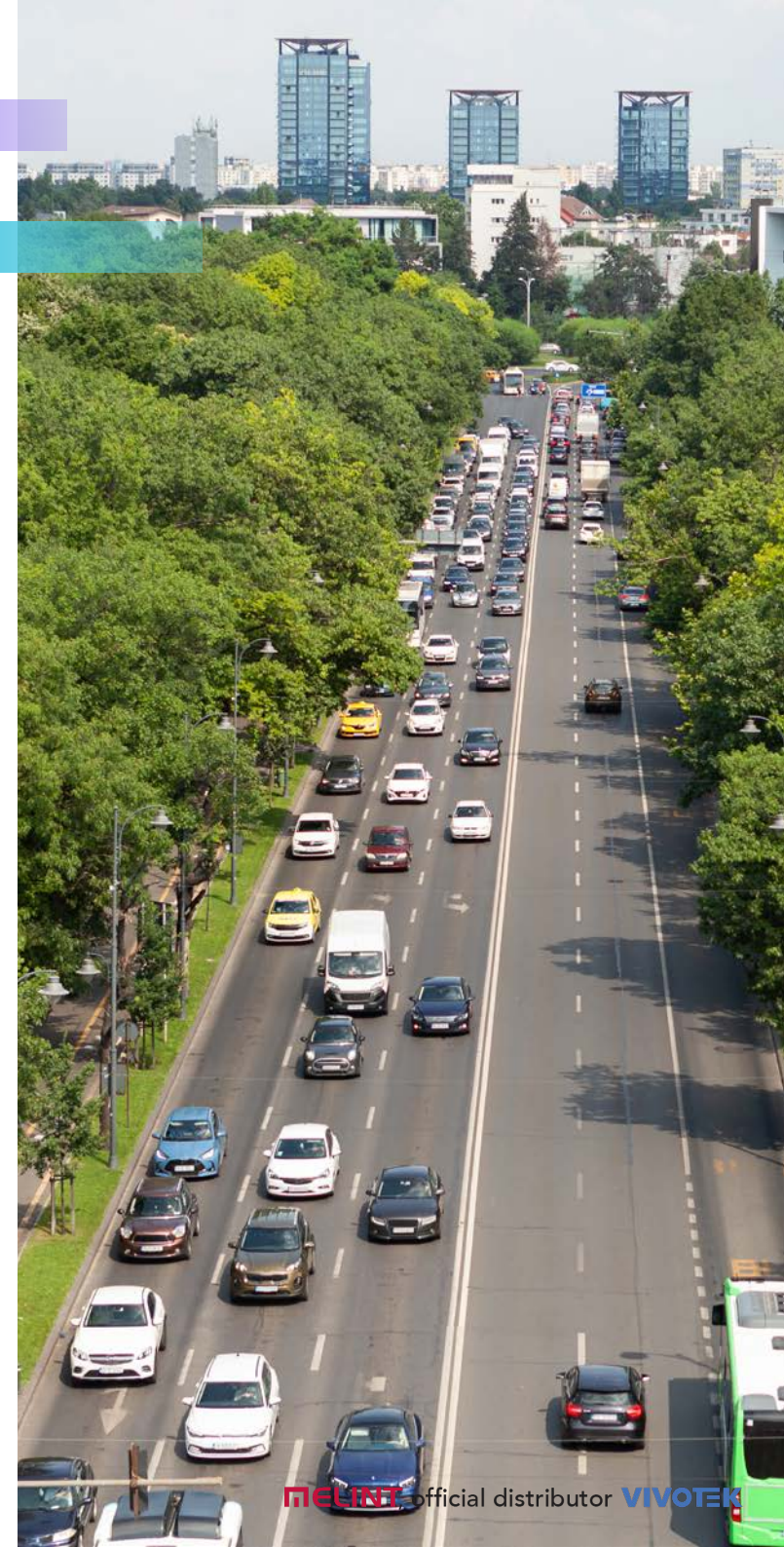
Smart Motion Detection

With accurate precision to detect human activity only, while also intelligently ignoring background changes in a given scene, VIVOTEK's SMD greatly minimizes the number of false alarms.



Significantly Lower Bandwidth via Smart Stream III

Fully compatible with H.264 and H.265, VIVOTEK's Smart Stream III allows reducing bandwidth consumption by up to 90%.





NEW

FD9365-EHTV-v2



NEW

IB9365-EHTV-v2



IP9165-HT-v2

| 2MP Cameras | Outdoor Dome | Bullet | Box |
|-----------------------------------|---|---|---|
| Camera Features | | | |
| Sensor Type | 1/2" progressive CMOS | 1/2" progressive CMOS | 1/2" Progressive CMOS |
| Lens Type/ Focal Length/ F-number | Motorized/ 4 ~ 9 mm (2.8 ~ 11.4 mm, equivalent focal length @ 1/2.8")/ F1.3 ~ F2.2 | Motorized/ 4 ~ 9 mm (3.5 ~ 11.4 mm, equivalent focal length @ 1/2.8")/ F1.3 ~ F2.2 | Remote Back Focus i-CS/ 3.9 ~ 10 mm/ F1.5 ~ F2.7 |
| Field of View | 120° ~ 46° (H) 60° ~ 26° (V) | 100° ~ 46° (H) 52° ~ 26° (V) | 110° ~ 43° (H) 59° ~ 24° (V) |
| Day/ Night | • | • | • |
| IR Illuminators | 50 m, IR LED*4 Smart IR III | 50 m, IR LED*4 Smart IR III | - |
| Min. Illumination | 0.01 lux @ F1.3 (Color) <0.005 lux @ F1.3 (B/W) 0 Lux with IR illumination on | 0.01 lux @ F1.3 (Color) <0.005 lux @ F1.3 (B/W) 0 Lux with IR illumination on | 0.01 lux @ F1.5 (Color) <0.005 lux @ F1.5 (B/W) |
| Max. Resolution/ Frame Rate | 60 fps @ 1920x1080 | 60 fps @ 1920x1080 | 60 fps @ 1920x1080 |
| WDR Technology* | WDR Pro II | WDR Pro II | WDR Pro II |
| On-board Storage | microSD/SDHC/SDXC card slot | microSD/SDHC/SDXC card slot | microSD/SDHC/SDXC card slot |
| Video/ Audio/ Network | | | |
| Video Compression | Triple-Codec (H.265/H.264/MJPEG) | Triple-Codec (H.265/H.264/MJPEG) | Triple-Codec (H.265/H.264/MJPEG) |
| Audio | Two-way Audio (Full duplex) | Two-way Audio (Full duplex) | Two-way Audio (Full duplex) |
| Digital Input/ Output | 2/2 | 3/3 | 2/2 |
| ONVIF | Profile G/S/T | Profile G/S/T | Profile G/S/T |
| Solution Integration | | | |
| Security | Secure Boot, Signed Firmware, Trend Micro IoT Security | Secure Boot, Signed Firmware, Trend Micro IoT Security | Secure Boot, Signed Firmware, Trend Micro IoT Security |
| VCA | Smart Motion Detection, Smart VCA, Vision OA | Smart Motion Detection, Smart VCA, Vision OA | Smart Motion Detection, Smart VCA |
| General | | | |
| Power Input/ Consumption | AC 24V/ DC 12V/ PoE Max. 25 W | AC 24V/ DC 12V/ PoE Max. 25 W | AC 24V/ DC 12V/ PoE Max. 9 W (DC 12V) Max. 18 W (AC 24V) Max. 9.06 W (PoE) |
| Housing | IP66, IP67, IK10, NEMA 4X | IP66, IP67, IK10, NEMA 4X | - |
| Dimensions | ø 174 x 123 mm | ø 153 x 283 mm | 155 x 70 x 61 mm (w/o lens) 210 x 70 x 66 mm (w/ lens) |
| Operating Temperature | -50°C ~ 60°C (-58°F ~ 140°F) | -50°C ~ 60°C (-58°F ~ 140°F) | -10°C ~ 60°C (14°F ~ 140°F) |
| NDAA Compliance Product | • | • | • |

* All specifications are subject to change without notice.

BACK TO CONTENTS

Network Camera

360° Fisheye Cameras

A Whole Different Perspective with Fisheye Models



360° Views

With fisheye lenses, VIVOTEK fisheye IP cameras can cover 360° with no blind spots, excellent for full situational coverage.



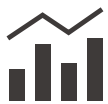
Dewarping Technology

VIVOTEK fisheye lens dewarping technology enables users to target specific areas with different viewing modes.



Smart IR II

With Smart IR II infrared illuminators, users can see in all directions up to 20m in total darkness. (outdoor models only)



AI-Powered Video Analytics

VIVOTEK's Smart VCA is a suite of multiple analytics that provide faster and more accurate detection for various scenarios.



10



1R



FE9391-EHV-v2



FE9191-H-v2



FE9192-H



FE9382-EHV-v2

| 360° Fisheye Cameras | 12 Megapixel | | | 6 Megapixel |
|-----------------------------------|--|---|---|--|
| Camera Features | | | | |
| Sensor Type | 1/2.3" Progressive CMOS in 4056x3040 | 1/2.3" Progressive CMOS in 4056x3040 | 1/2.3" Progressive CMOS in 4056x3040 | 1/1.8" Progressive CMOS in 3840x2160 |
| Lens Type/ Focal Length/ F-number | Fixed/ 1.22 mm/ F2.0 | Fixed/ 1.22 mm/ F2.0 | Fixed / 1.22 mm / F2.0 | Fixed/ 1.245 mm/ F1.6 |
| Field of View | 180° (H) 180° (V) | 180° (H) 180° (V) | 180° (H) 180° (V) | 180° (H) 180° (V) |
| Day/ Night | • | • | • | • |
| IR Illuminators | 20 m, IR LED*4 | - | - | 20 m, IR LED*4 |
| Min. Illumination | 0.1 lux @ F2.0 (Color) <0.005 lux @ F2.0 (B/W) 0 lux with IR illumination on | 0.1 lux @ F2.0 (Color) <0.005 lux @ F2.0 (B/W) | 0.1 lux @ F2.0 (Color) <0.005 lux @ F2.0 (B/W) | 0.065 lux @ F1.6 (Color) <0.001 lux @ F1.6 (B/W) 0 lux with IR illumination on |
| Max. Resolution/ Frame Rate | 30 fps @ 2944x2944 | 30 fps @ 2944x2944 | 30 fps @ 2944x2944 | 30 fps @ 2048x2048 |
| WDR Technology* | WDR Pro | WDR Pro | WDR Pro | WDR Pro |
| On-board Storage | microSD/ SDHC/ SDXC card slot | microSD/ SDHC/ SDXC card slot | microSD/ SDHC/ SDXC card slot | microSD/ SDHC/ SDXC card slot |
| Video/ Audio/ Network | | | | |
| Video Compression | Triple-Codec (H.265/ H.264/ MJPEG) | Triple-Codec (H.265/ H.264/ MJPEG) | Triple-Codec (H.265/ H.264/ MJPEG) | Triple-Codec (H.265/ H.264/ MJPEG) |
| Audio | Two-way Audio (Full duplex) (optional p/n) | Two-way Audio (Full duplex) (cable accessory) | One-way Audio | Two-way Audio (Full duplex) (optional p/n) |
| Digital Input/ Output | 1/1 (optional p/n) | 1/1 (cable accessory) | - | 1/1 (optional p/n) |
| ONVIF | Profile G/S/T | Profile G/S/T | Profile G/S/T | Profile G/S/T |
| Solution Integration | | | | |
| Security | Secure Boot, Signed Firmware, Trend Micro IoT Security | Secure Boot, Signed Firmware, Trend Micro IoT Security | Secure Boot, Signed Firmware, Trend Micro IoT Security | Secure Boot, Signed Firmware, Trend Micro IoT Security |
| VCA | Smart Motion Detection, Smart VCA, Vision OA | Smart Motion Detection, Smart VCA, Vision OA | Smart Motion Detection, Smart VCA, Vision OA | Smart Motion Detection, Smart VCA, Vision OA |
| General | | | | |
| Power Input/ Consumption | PoE / Max. 22.5 W | PoE / Max. 9 W | PoE / Max. 9 W | PoE / Max. 12.5 W |
| Housing | IP66, IK10, NEMA 4X | IK10 | IK10 | IP66, IK10, NEMA 4X |
| Dimensions | ø 150 x 68.2 mm | ø 150 x 68.2 mm | ø 82 x 122 mm | ø 150 x 68.2 mm |
| Operating Temperature | -40°C ~ 55°C (-40°F ~ 131°F) | -10°C ~ 50°C (14°F ~ 122°F) | -10°C ~ 50°C (14°F ~ 122°F) | -40°C ~ 60°C (-40°F ~ 140°F) |
| NDA Compliance Product | • | • | • | • |

* All specifications are subject to change without notice.

Network Camera

Multi-Sensor Cameras

End to End Coverage with VIVOTEK Multi-Sensor models



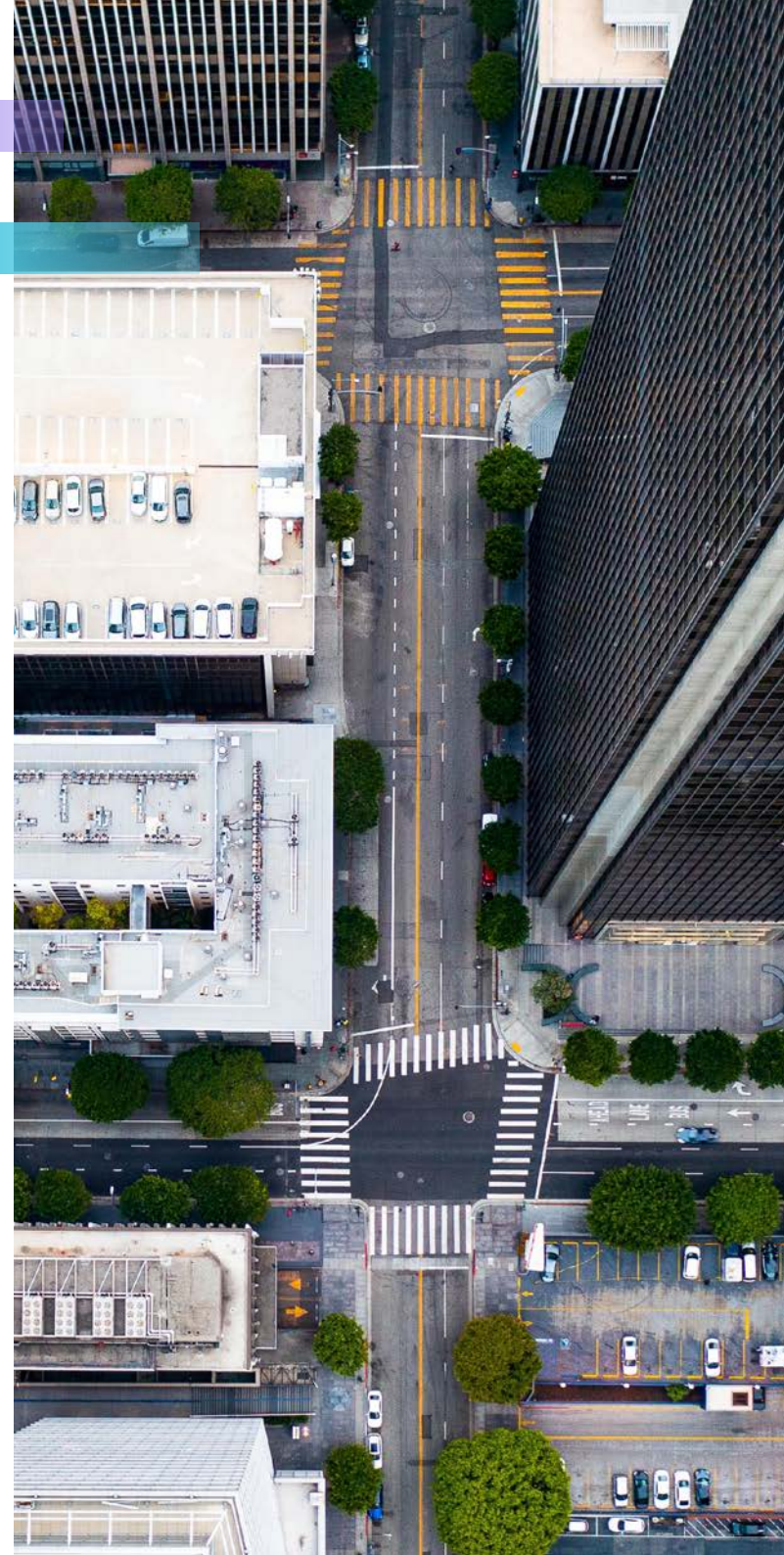
20 Megapixels

4 x 5MP sensors for a total of 20MP for complete comprehensive coverage.



Multi-Directional

The MA9322-EHTVL has 4 independent sensors, allowing users the ability to target 4 regions from a single IP address, 4 cameras in 1.

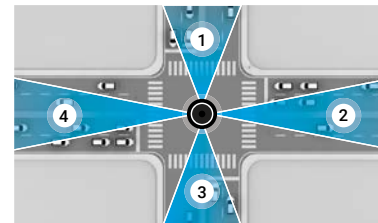




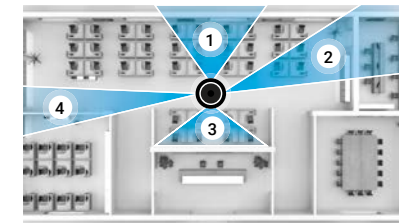
Model **NEW** MA9322-EHTVL MS9321-EHV-v2

| 20 Megapixel Cameras | Multi-Directional | 180° Panoramic |
|-----------------------------------|---|---|
| Camera Features | | |
| Sensor Type | 1/2.7" Progressive CMOS | 1/2.8" Progressive CMOS |
| Lens Type/ Focal Length/ F-number | Motorized/ 3.7 ~ 7.7 mm/ F1.9 ~ F2.9 | Fixed-focal / 3.5 mm / F2.0 |
| Field of View | 88.6° ~ 40.1° (H) 61.2° ~ 28.6° (V) | 180° (Horizontal) 65° (Vertical) |
| Day/ Night | • | • |
| IR Illuminators | 30 m | 30 m |
| Min. Illumination | 0.035 lux @ F1.9 (Color) 0.005 lux @ F1.9 (B/W) 0 lux with IR illumination on | 0.15 lux@F2.0 0 lux with IR illumination on |
| Max. Resolution/ Frame Rate | 12 fps @ 2688x1920 | 30 fps @ 7168x2688 |
| WDR Technology* | WDR Pro | WDR Pro |
| On-board Storage | microSD/SDHC/SDXC card slot | microSD/SDHC/SDXC card slot |
| Video/ Audio/ Network | | |
| Video Compression | Triple-Codec (H.265/H.264/MJPEG) | Triple-Codec (H.265/H.264/MJPEG) |
| Audio | Two-way Audio (Full duplex) | Two-way Audio (Full duplex) |
| Digital Input/ Output | 1/1 | 1/1 |
| ONVIF | - | • |
| Solution Integration | | |
| Security | - | Trend Micro IoT Security Signed firmware / secure boot |
| VCA | - | Smart Motion Detection, Vision Object Analytics, Smart VCA |
| General | | |
| Power Input/ Consumption | AC 24V/ PoE Max. 25 W/ 25 W | AC 24V/ PoE |
| Housing | IP66, IK10, NEMA 4X | IP66, IK10 |
| Dimensions | ø 267 x 114 mm ø 275 x 118 mm (w/ bracket) | 308 x 167 x 130 mm |
| Operating Temperature | -40°C ~ 50°C (-40°F ~ 122°F) | -40°C ~ 55°C (-40°F ~ 131°F) |
| NDA Compliance Product | • | • |

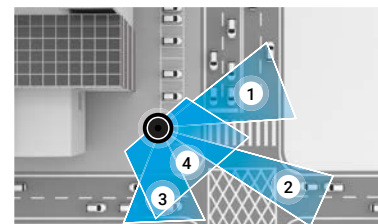
Traffic



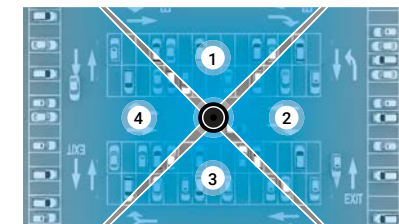
Interiors



Corners



Parking



* All specifications are subject to change without notice.



Network Camera

VERSATILE Series

Advanced and feature rich for most applications, great image quality.



Available AI Analytics

Add Smart VCA to V-Series cameras with additional license purchase.



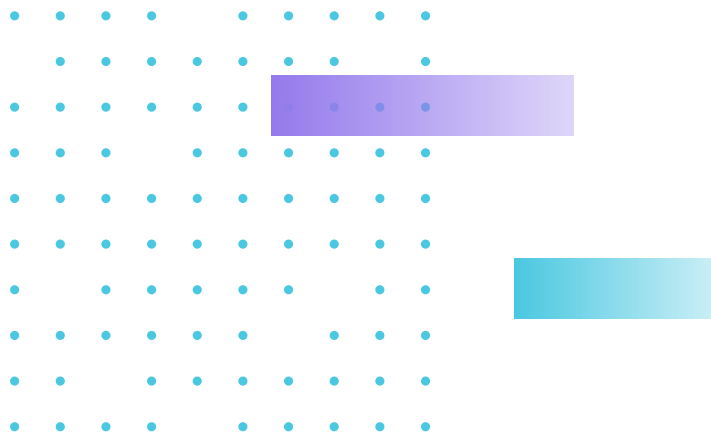
Various Lenses Option

Offer various lens options, from fixed focal length to motorized adjustable lenses, allowing you to capture the finest details.



Wi-Fi Installation

Setup cameras with a smartphone (available on select models only)





Network Cameras

VERSATILE Series

[BACK TO CONTENTS](#)





Network Camera

5MP 87-A-Series Cameras

Comprehensive Security with VIVOTEK 87-A Series



Fully Loaded

5MP VIVOTEK 87-A series of products include 2-way audio, 2x Digital Inputs, and 2x Digital Outputs to ensure maximum alarm capabilities.



AI-Powered Video Analytics (w/ license purchase)

VIVOTEK's Smart VCA is a suite of multiple analytics that provide faster and more accurate detection for various scenarios.



Smart Motion Detection

With accurate precision to detect human activity only, while also intelligently ignoring background changes in a given scene, VIVOTEK's SMD greatly minimizes the number of false alarms.



Significantly Lower Bandwidth via Smart Stream III

Fully compatible with H.264 and H.265, VIVOTEK's Smart Stream III allows reducing bandwidth consumption by up to 90%.





FD9387-HTV-A/EHTV-A



FD9187-HT-A



IB9387-HT-A/EHT-A

| 5MP Cameras | Outdoor Dome | Indoor Dome | Bullet |
|-----------------------------------|---|---|---|
| Camera Features | | | |
| Sensor Type | 1/2.7" Progressive CMOS | 1/2.7" Progressive CMOS | 1/2.7" Progressive CMOS |
| Lens Type/ Focal Length/ F-number | Motorized/ 2.7 ~ 13.5 mm/ F1.4 ~ F2.8 | Motorized/ 2.7 ~ 13.5 mm/ F1.4 ~ F2.8 | Motorized/ 2.7 ~ 13.5 mm/ F1.4 ~ F2.8 |
| Field of View | 100° ~ 30° (H) 72° ~ 23° (V) | 100° ~ 30° (H) 72° ~ 23° (V) | 100° ~ 30° (H) 72° ~ 23° (V) |
| Day/ Night | • | • | • |
| IR Illuminators | 50 m, IR LED*4 | 50 m, IR LED*4 | 50 m, IR LED*6 |
| Min. Illumination | 0.075 lux @ F1.4 (Color) <0.01 lux @ F1.4 (B/W) 0 lux with IR illumination on | 0.075 lux @ F1.4 (Color) <0.01 lux @ F1.4 (B/W) 0 lux with IR illumination on | 0.075 lux @ F1.4 (Color) <0.01 lux @ F1.4 (B/W) 0 lux with IR illumination on |
| Max. Resolution/ Frame Rate | 30 fps @ 2560x1920 60 fps @ 1920x1080 | 30 fps @ 2560x1920 60 fps @ 1920x1080 | 30 fps @ 2560x1920 60 fps @ 1920x1080 |
| WDR Technology* | WDR Pro | WDR Pro | WDR Pro |
| On-board Storage | microSD / SDHC / SDXC card slot | microSD / SDHC / SDXC card slot | microSD / SDHC / SDXC card slot |
| Video/ Audio/ Network | | | |
| Video Compression | Triple-Codec (H.265/H.264/MJPEG) | Triple-Codec (H.265/H.264/MJPEG) | Triple-Codec (H.265/H.264/MJPEG) |
| Audio | Two-way Audio (Full duplex) | Two-way Audio (Full duplex) | Two-way Audio (Full duplex) |
| Digital Input/ Output | 2/2 | 2/2 | 2/2 |
| ONVIF | Profile G/S | Profile G/S | Profile G/S |
| Solution Integration | | | |
| Security | Trend Micro IoT Security | Trend Micro IoT Security | Trend Micro IoT Security |
| VCA | Smart Motion Detection, Smart VCA (optional) | Smart Motion Detection, Smart VCA (optional) | Smart Motion Detection, Smart VCA (optional) |
| General | | | |
| Power Input/ Consumption | AC 24V (optional) /DC 12V /PoE FD9387-HTV-A: Max. 12 W FD9387-EHTV-A: Max. 22 W | AC 24V (optional) /DC 12V /PoE Max. 12 W | AC 24V/ DC 12V/ PoE IB9387-HT-A: Max. 12.95 W IB9387-EHT-A: Max. 25 W |
| Housing | IP66, IP67, IK10 | - | IP66, IP67, IK10 (Metal housing) |
| Dimensions | ø 155 x 103.2 mm | ø 139 x 103 mm | 118 x 118 x 294.6 mm |
| Operating Temperature | -30°C ~ 60°C (-22°F ~ 140°F) (-HTV-A) -50°C ~ 60°C (-58°F ~ 140°F) (-EHTV-A) | -10°C ~ 45°C (14°F ~ 113°F) | -30°C ~ 60°C (-22°F ~ 140°F) (-HT-A) -50°C ~ 60°C (-58°F ~ 140°F) (-EHT-A) |
| NDA Compliance Product | • | • | • |

* All specifications are subject to change without notice.



Network Camera

5MP 89-v2-Series Cameras

Essential Surveillance with VIVOTEK 89-v2 Series



Only the Necessities

5MP VIVOTEK 89-v2 series remove the 2-way audio, digital inputs, and digital outputs for customers looking only for a pure IP surveillance solution.



Variety

VIVOTEK 89-v2 series is available in domes (outdoor, indoor), bullets, and turret housings, with both fixed lens and motorized lens options.



AI-Powered Video Analytics (w/ license purchase)

VIVOTEK's Smart VCA is a suite of multiple analytics that provide faster and more accurate detection for various scenarios.



Smart Motion Detection

With accurate precision to detect human activity only, while also intelligently ignoring background changes in a given scene, VIVOTEK's SMD greatly minimizes the number of false alarms.





Model FD9389-EHV-v2 FD9389-EHTV-v2 FD9189-H-v2 FD9189-HT-v2 IB9389-EH-v2 IB9389-EHT-v2 IT9389-H-v2

| 5MP Cameras | Outdoor Dome | | Indoor Dome | | Bullet | | Turret |
|-----------------------------------|---|---|---|---|---|---|---|
| Camera Features | | | | | | | |
| Sensor Type | 1/2.7" Progressive CMOS | 1/2.7" Progressive CMOS | 1/2.7" Progressive CMOS | 1/2.7" Progressive CMOS | 1/2.7" Progressive CMOS | 1/2.7" Progressive CMOS | 1/2.7" Progressive CMOS |
| Lens Type/ Focal Length/ F-number | Fixed/ 2.8 mm / F2.0 | Motorized/ 2.8 ~ 10mm/ F1.8 ~ F2.74 | Fixed/ 2.8 mm / F2.0 | Motorized/ 2.8 ~ 10mm/ F1.8 ~ F2.74 | Fixed/ 3.6 mm/ F2.0 | Motorized/ 2.8 ~ 10mm/ F1.8 ~ F2.74 | Fixed/ 2.8 mm/ F2.0 |
| Field of View | 103° (H) 76° (V) | 95° ~ 41° (H) 69° ~ 31° (V) | 103° (H) 76° (V) | 95° ~ 41° (H) 69° ~ 31° (V) | 76° (H) 56° (V) | 95° ~ 41° (H) 69° ~ 31° (V) | 103° (H) 76° (V) |
| Day/ Night | • | • | • | • | • | • | • |
| IR Illuminators | 30 m, IR LED*4 | 30 m, IR LED*4 | 30 m, IR LED*4 | 30 m, IR LED*4 | 30 m, IR LED*4 | 30 m, IR LED*4 | 30 m, IR LED*2 |
| Min. Illumination | 0.06 lux @ F2.0 (Color) 0.01 lux @ F2.0 (B/W) 0 lux with IR illumination on | 0.06 lux @ F1.8 (Color) 0.01 lux @ F1.8 (B/W) 0 lux with IR illumination on | 0.06 lux @ F2.0 (Color) 0.01 lux @ F2.0 (B/W) 0 lux with IR illumination on | 0.06 lux @ F1.8 (Color) 0.01 lux @ F1.8 (B/W) 0 lux with IR illumination on | 0.06 lux @ F2.0 (Color) 0.01 lux @ F2.0 (B/W) 0 lux with IR illumination on | 0.06 lux @ F1.8 (Color) 0.01 lux @ F1.8 (B/W) 0 lux with IR illumination on | 0.06 lux @ F2.0 (Color) 0.01 lux @ F2.0 (B/W) 0 lux with IR illumination on |
| Max. Resolution/ Frame Rate | 30 fps @ 2560x1920 60 fps @ 1920x1080 | 30 fps @ 2560x1920 60 fps @ 1920x1080 | 30 fps @ 2560x1920 60 fps @ 1920x1080 | 30 fps @ 2560x1920 60 fps @ 1920x1080 | 30 fps @ 2560x1920 60 fps @ 1920x1080 | 30 fps @ 2560x1920 60 fps @ 1920x1080 | 30 fps @ 2560x1920 60 fps @ 1920x1080 |
| WDR Technology* | WDR Pro | WDR Pro | WDR Pro | WDR Pro | WDR Pro | WDR Pro | WDR Pro |
| On-board Storage | microSD/SDHC/SDXC card slot | microSD/SDHC/SDXC card slot | microSD/SDHC/SDXC card slot | microSD/SDHC/SDXC card slot | microSD/SDHC/SDXC card slot | microSD/SDHC/SDXC card slot | microSD/SDHC/SDXC card slot |
| Video/ Audio/ Network | | | | | | | |
| Video Compression | Triple-Codec (H.265/H.264/MJPEG) | Triple-Codec (H.265/H.264/MJPEG) | Triple-Codec (H.265/H.264/MJPEG) | Triple-Codec (H.265/H.264/MJPEG) | Triple-Codec (H.265/H.264/MJPEG) | Triple-Codec (H.265/H.264/MJPEG) | Triple-Codec (H.265/H.264/MJPEG) |
| Audio | One-way Audio | One-way Audio | One-way Audio | One-way Audio | - | - | One-way Audio |
| Digital Input/ Output | - | - | - | - | - | - | - |
| ONVIF | Profile G/S/T | Profile G/S/T | Profile G/S/T | Profile G/S/T | Profile G/S/T | Profile G/S/T | Profile G/S/T |
| Solution Integration | | | | | | | |
| Security | Secure Boot, Signed Firmware, Trend Micro IoT Security | Secure Boot, Signed Firmware, Trend Micro IoT Security | Secure Boot, Signed Firmware, Trend Micro IoT Security | Secure Boot, Signed Firmware, Trend Micro IoT Security | Secure Boot, Signed Firmware, Trend Micro IoT Security | Secure Boot, Signed Firmware, Trend Micro IoT Security | Secure Boot, Signed Firmware, Trend Micro IoT Security |
| VCA | Smart Motion Detection, Smart VCA (optional) | Smart Motion Detection, Smart VCA (optional) | Smart Motion Detection, Smart VCA (optional) | Smart Motion Detection, Smart VCA (optional) | Smart Motion Detection, Smart VCA (optional) | Smart Motion Detection, Smart VCA (optional) | Smart Motion Detection, Smart VCA (optional) |
| General | | | | | | | |
| Power Input/ Consumption | PoE/ Max. 8.55 W | PoE/ Max. 12.3 W | PoE/ Max. 6.3 W | PoE/ Max. 9.7 W | PoE/ Max. 11 W | PoE/ Max. 12.95 W | PoE/ Max. 7.4 W |
| Housing | IP66, IK10 | IP66, IK10 | - | - | IP66, IK10 (housing) | IP66, IK10 (housing) | IP66, IK08 |
| Dimensions | ø 129 x 94 mm | ø 129 x 94 mm | ø 130 X 95 mm | ø 130 X 95 mm | ø 86 x 300 mm | ø 88 x 308 mm | ø 108 x 79 mm |
| Operating Temperature | w-40°C ~ 60°C (-40°F ~ 140°F) | -40°C ~ 60°C (-40°F ~ 140°F) | -10°C ~ 50°C (14°F ~ 122°F) | -10°C ~ 50°C (14°F ~ 122°F) | -40°C ~ 60°C (-40°F ~ 140°F) | -40°C ~ 60°C (-40°F ~ 140°F) | -20°C ~ 50°C (-4°F ~ 122°F) |
| NDAA Compliance Product | • | • | • | • | • | • | • |

* All specifications are subject to change without notice.

[BACK TO CONTENTS](#)



Network Camera

2MP Cameras

Comprehensive Security with VIVOTEK 67-v2 Series



Easy to Install

2MP VIVOTEK 67-v2 series of products include mounting brackets that work with most standard junction boxes as well as Wi-Fi camera setup via a smartphone.



AI-Powered Video Analytics (w/ license purchase)

VIVOTEK's Smart VCA is a suite of multiple analytics that provide faster and more accurate detection for various scenarios.



Smart Motion Detection

With accurate precision to detect human activity only, while also intelligently ignoring background changes in a given scene, VIVOTEK's SMD greatly minimizes the number of false alarms.



Wi-Fi Installation

Use your smartphone to connect via Wi-Fi for easy camera setup.





FD9367-EHTV-v2



FD9167-HT-v2



IB9367-EHT-v2

| 2MP Cameras | Outdoor Dome | Indoor Dome | Bullet |
|-----------------------------------|--|--|--|
| Camera Features | | | |
| Sensor Type | 1/2.8" progressive CMOS | 1/2.8" progressive CMOS | 1/2.8" progressive CMOS |
| Lens Type/ Focal Length/ F-number | Motorized/ 2.7 ~ 13.5 mm/ F1.4 ~ F2.8 | Motorized/ 2.7 ~ 13.5 mm/ F1.4 ~ F2.8 | Motorized/ 2.7 ~ 13.5 mm/ F1.4 ~ F2.8 |
| Field of View | 110° ~ 33° (H) 55° ~ 18° (V) | 110° ~ 33° (H) 55° ~ 18° (V) | 105° ~ 33° (H) 55° ~ 18° (V) |
| Day/ Night | • | • | • |
| IR Illuminators | 50 m, IR LED*4 | 50 m, IR LED*4 | 50 m, IR LED*4 |
| Min. Illumination | 0.035 lux @ F1.4 (Color) <0.005 lux @ F1.4 (B/W) 0 Lux with IR illumination on | 0.035 lux @ F1.4 (Color) <0.005 lux @ F1.4 (B/W) 0 Lux with IR illumination on | 0.035 lux @ F1.4 (Color) <0.005 lux @ F1.4 (B/W) 0 Lux with IR illumination on |
| Max. Resolution/ Frame Rate | 60 fps @ 1920x1080 | 60 fps @ 1920x1080 | 60 fps @ 1920x1080 |
| WDR Technology* | WDR Pro | WDR Pro | WDR Pro |
| On-board Storage | microSD/SDHC/SDXC card slot | microSD/SDHC/SDXC card slot | microSD/SDHC/SDXC card slot |
| Video/ Audio/ Network | | | |
| Video Compression | Triple-Codec (H.265/H.264/MJPEG) | Triple-Codec (H.265/H.264/MJPEG) | Triple-Codec (H.265/H.264/MJPEG) |
| Audio | Two-way Audio (Full duplex) | Two-way Audio (Full duplex) | Two-way Audio (Full duplex) |
| Digital Input/ Output | 1/1 | 1/1 | 1/1 |
| ONVIF | Profile G/S/T | Profile G/S/T | Profile G/S/T |
| Solution Integration | | | |
| Security | Secure Boot, Signed Firmware, Trend Micro IoT Security | Secure Boot, Signed Firmware, Trend Micro IoT Security | Secure Boot, Signed Firmware, Trend Micro IoT Security |
| VCA | Smart Motion Detection, Smart VCA (optional) | Smart Motion Detection, Smart VCA (optional) | Smart Motion Detection, Smart VCA (optional) |
| General | | | |
| Power Input/ Consumption | AC 24V (Optional)/ DC 12V/ PoE Max. 9 W | AC 24V (Optional)/ DC 12V/ PoE Max. 9 W | AC 24V (Optional)/ DC 12V/ PoE Max. 10.77 W |
| Housing | IP66, IP67, IK10, NEMA 4X | - | IP66, IP67, IK10, NEMA 4X |
| Dimensions | ø 174 x 123 mm | ø 174 x 123 mm | ø 153 x 288 mm |
| Operating Temperature | -40°C ~ 60°C (-40°F ~ 140°F) | -10°C ~ 50°C (14°F ~ 122°F) | -40°C ~ 60°C (-40°F ~ 140°F) |
| NDA Compliance Product | • | • | • |

* All specifications are subject to change without notice.



Network Camera

Box Cameras

Customizable, High Resolution Surveillance



High Resolution

5 and 3 Megapixel options to capture highly detailed video.



Changeable Lenses

Change lenses as required to capture the most details.



SNV

Supreme Night Vision (SNV) for great low light performance.





Model **NEW** IP9181-HT-v2 IP9181-H IP9171-HP

| Box Cameras | 5 Megapixel | | 3 Megapixel |
|-----------------------------------|---|---|---|
| Camera Features | | | |
| Sensor Type | 1/2.8" Progressive CMOS | 1/1.8" Progressive CMOS | 1/2.8" Progressive CMOS |
| Lens Type/ Focal Length/ F-number | Remote Back Focus/ 2.8 ~ 8.5 mm/ F1.2 | Remote Back Focus/ 4.1 ~ 9 mm/ F1.6 ~ F2.4 | Remote Back Focus/ 2.8 ~ 8 mm/ F1.2 ~ F1.95 |
| Field of View | 107° ~ 36° (H) 77° ~ 27° (V) | 90° ~ 46° (H) 68° ~ 35° (V) | 114° ~ 51° (H) 84° ~ 39° (V) |
| Day/ Night | • | • | • |
| IR Illuminators | - | - | - |
| Min. Illumination | 0.01 lux @ F1.2 (Color) 0.005 lux @ F1.2 (B/W) | 0.07 lux @ F1.6 (Color) 0.001 lux @ F1.6 (B/W) | 0.01 lux @ F1.2 (Color) 0.001 lux @ F1.2 (B/W) |
| Max. Resolution/ Frame Rate | 30 fps @ 2560x1920 30 fps @ 2880x1632 | 30 fps @ 2560x1920 60 fps @ 1920x1080 | 30 fps @ 2048x1536 |
| WDR Technology* | WDR Pro | WDR Pro | WDR Pro |
| On-board Storage | microSD/ SDHC/ SDXC card slot | microSD/ SDHC/ SDXC card slot | microSD/SDHC/SDXC card slot |
| Video/ Audio/ Network | | | |
| Video Compression | Triple-Codec (H.265/ H.264/ MJPEG) | Triple-Codec (H.265/ H.264/ MJPEG) | Triple-Codec (H.265/H.264/MJPEG) |
| Audio | Two-way Audio (Full duplex) | Two-way Audio (Full duplex) | Two-way Audio (Full duplex) |
| Digital Input/ Output | 2/2 | 3/1 | 3/1 |
| ONVIF | Profile G/S/T | Profile G/S | Profile G/S |
| Solution Integration | | | |
| Security | Secure Boot, Signed Firmware, Trend Micro IoT Security | - | - |
| VCA | Smart Motion Detection, Smart VCA (optional) | - | - |
| General | | | |
| Power Input/ Consumption | AC 24V/ DC 12V/ PoE Max. 15 W | AC 24V/ DC 12V/ PoE Max. 9.7 W | AC 24V/ DC 12V/ PoE Max. 8.6 W |
| Housing | - | - | - |
| Dimensions | 155 x 70 x 61 mm (w/o lens) 210 x 70 x 66 mm (w/ lens) | 210 x 70 x 63 mm | 210 x 70 x 63 mm |
| Operating Temperature | -10°C ~ 60°C (14°F ~ 140°F) | -10°C ~ 50°C (14°F ~ 122°F) | -10°C ~ 50°C (14°F ~ 122°F) |
| NDA Compliance Product | • | - | - |

* All specifications are subject to change without notice.



Network Camera

Speed Dome Cameras

Great Video Quality PTZ Solutions for both Indoors and Outdoors



Smart Tracking Advanced

Innovative deep-learning algorithm to increase accuracy when tracking people or vehicles in motion.



Outdoor Ready

Designed for outdoor environments with IP66 and IK10 certification plus NEMA 4X.



Camera Link

Enabled to work with Camera Link spotter cameras to effortlessly capture event details.



Airport



Port



| Model | NEW SD9394-EHL | SD9384-EHL | SD9368-EHL | SD9161-H-v2 |
|-----------------------------------|---|---|---|--|
| Speed Domes | 8 MP Outdoor | 5 MP Outdoor | 2 MP Outdoor | 2 MP Indoor |
| Camera Features | | | | |
| Sensor Type | 1/1.8" Progressive CMOS | 1/2.8" Progressive CMOS | 1/2.8" Progressive CMOS | 1/2.8" Progressive CMOS |
| Lens Type/ Focal Length/ F-number | 32x Optical Zoom Auto Focus/ 6.5 ~ 212 mm/ F1.4 ~ F4.9 | 30x Optical Zoom Auto Focus/ 4.94 ~ 148.24 mm/ F1.3~4.6 | 40x Optical Zoom Auto Focus/ 4.25 ~ 170 mm/ F1.6 ~ F4.95 | 10x Optical Zoom Auto Focus/ 5.1 ~ 51 mm/ F1.6 ~ F1.8 |
| Field of View | 63.5° ~ 2.0° (H) 37.4° ~ 1.1° (V) | 54.1° ~ 1.9° (H) 41.2° ~ 1.4° (V) | 65.7° ~ 1.88° (H) 39.39° ~ 1.09° (V) | 55.2° ~ 7.1° (H) 31.8° ~ 4.1° (V) |
| Day/ Night | • | • | • | • |
| IR Illuminators | 200m, IR LED*8 | 200m, IR LED*8 | 250 m, IR LED*8 | - |
| Min. Illumination | 0.03 lux @ F1.4 (Color) <0.005 lux @ F1.4 (B/W) 0 lux with IR illumination on | 0.03 lux @ F1.3 (Color) <0.005 lux @ F1.3 (B/W) 0 lux with IR illumination on | 0.04 lux @ F1.6 (Color) <0.005 lux @ F1.6 (B/W) 0 lux with IR illumination on | 0.14 lux @ F1.6 (Color) 0.005 lux @ F1.6 (B/W) |
| Max. Resolution/ Frame Rate | 30 fps @ 3840 x 2160 | 30 fps @ 2560x1920 | 60 fps @ 1920x1080 | 60 fps @ 1920x1080 |
| WDR Technology* | WDR Pro | WDR Pro | WDR Pro | WDR Pro |
| On-board Storage | microSD/SDHC/SDXC card slot | microSD/ SDHC/ SDXC card slot | microSD/ SDHC/ SDXC card slot | microSD/ SDHC/ SDXC card slot |
| Video/ Audio/ Network | | | | |
| Video Compression | Triple-Codec (H.265/H.264/MJPEG) | Triple-Codec (H.265/ H.264/ MJPEG) | Triple-Codec (H.265/ H.264/ MJPEG) | Triple-Codec (H.265/ H.264/ MJPEG) |
| Audio | Two-way Audio (Full duplex) | Two-way Audio (Full duplex) | Two-way Audio (Full duplex) | Two-way Audio (Full duplex) |
| Digital Input/ Output | 44958 | 2/1 | 2/1 | 2/1 |
| ONVIF | Profile G/S/T | Profile G/S/T | Profile G/S/T | Profile G/S/T |
| Solution Integration | | | | |
| Security | Secure Boot, Signed Firmware, Trend Micro IoT Security | Secure Boot, Signed Firmware, Trend Micro IoT Security | Secure Boot, Signed Firmware, Trend Micro IoT Security | Secure Boot, Signed Firmware, Trend Micro IoT Security |
| VCA | Smart Tracking Advanced, Vision OA | Smart Tracking Advanced, Vision OA | Smart Tracking Advanced, Vision OA | Smart Tracking Advanced, Vision OA |
| General | | | | |
| Power Input/ Consumption | AC 24V/ DC 48V/ IEEE 802.3 bt PoE Max. 51 W | AC 24V/ DC 48V/ IEEE 802.3 bt PoE Max. 51 W | AC 24V/ DC 48V/ IEEE 802.3 bt PoE Max. 51 W | AC 24V/ DC 24V/ IEEE 802.3at PoE Max. 17 W |
| Housing | IP66, IK10, NEMA 4X | IP66, IK10, NEMA 4X | IP66, IK10, NEMA 4X | - |
| Dimensions | ø 256 x 336 mm | ø 256 x 336 mm | ø 256 x 336 mm | ø 172 x 157 mm |
| Operating Temperature | -40°C ~ 55°C (-40°F ~ 131°F) | -40°C ~ 60°C (-40°F ~ 140°F) | -40°C ~ 60°C (-40°F ~ 140°F) | -10°C ~ 55°C (14°F ~ 131°F) |
| NDAA Compliance Product | • | • | • | • |

* All specifications are subject to change without notice.

[BACK TO CONTENTS](#)



Network Camera

Specialty Cameras

Specialized Coverage with distinct VIVOTEK Models



180° Panoramic Views

With 2 sensors stitched together, the MS9390-HV panoramic IP camera provides excellent 180° coverage of medium sized areas.



Split Type Camera System

VC9101 's split-type camera system can support one camera unit (4MP pinhole or 5MP fisheye) for the ultimate discretion. Great for use in ATMs, vending machines, and more.





| Model | NEW MS9390-HV-v2 | VC9101 |
|-----------------------------------|---|---|
| | 8 Megapixel / 180° Panoramic | 5 Megapixel / Split Type Camera |
| Camera Features | | |
| Sensor Type | 1/2.7" Progressive CMOS | 1/2.7" Progressive CMOS |
| Lens Type/ Focal Length/ F-number | Fixed/ 2.8 mm/ F1.2 | Pinhole CU9171-H(F): Fixed/ 3.7mm/ F2.5 Fisheye CU9183-H(F): Fixed/ 1.22mm/ F2.0 |
| Field of View | 180° (H) 50° (V) | CU9171-H(F): 93° (H), 48° (V) CU9183-H(F): 180° (H), 180° (V) |
| Day/ Night | • | - |
| IR Illuminators | 20 m | - |
| Min. Illumination | 0.05 lux @ F1.2 (Color) 0.01 lux @ F1.2 (B/W) 0 lux with IR illumination on | CU9171-H(F): 0.045 lux @ F2.5 (Color) CU9183-H(F): 0.035 lux @ F2.0 (Color) |
| Max. Resolution/ Frame Rate | 30 fps @ 4864x1632 | CU9171-H(F): 30 fps @ 2688x1520 CU9183-H(F): 30 fps @ 1920x1920 |
| WDR Technology* | WDR Pro | WDR Pro |
| On-board Storage | microSD/ SDHC/ SDXC card slot | microSD/ SDHC/ SDXC card slot |
| Video/ Audio/ Network | | |
| Video Compression | Triple-Codec (H.265/ H.264/ MJPEG) | Triple-Codec (H.265/ H.264/ MJPEG) |
| Audio | One-way Audio | Two-way Audio (Full duplex) |
| Digital Input/ Output | - | 1/1 |
| ONVIF | Profile G/S/T | Profile G/S/T |
| Solution Integration | | |
| Security | Secure Boot, Signed Firmware, Trend Micro IoT Security | Secure Boot, Signed Firmware, Trend Micro IoT Security |
| VCA | Smart Motion Detection, Smart VCA (optional) | Smart Motion Detection, Face Detection |
| General | | |
| Power Input/ Consumption | PoE/ Max. 20 W | DC 12V/ PoE Max. 8.5 W |
| Housing | IP66, IK10 | - |
| Dimensions | 165 x 112 x 97 mm (w/o sunshield) 165 x 119 x 100 mm (w/ sunshield) | 105 x 84 x 30 mm |
| Operating Temperature | -40°C ~ 55°C (-40°F ~ 131°F) | -10°C ~ 50°C (14°F ~ 122°F) |
| NDAA Compliance Product | • | • |

* All specifications are subject to change without notice.

[BACK TO CONTENTS](#)



Network Camera

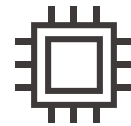
COMPETITIVE Series

Cost effective professional surveillance, good image quality.



Large Variety

Many models and resolutions to choose from for all your surveillance needs.



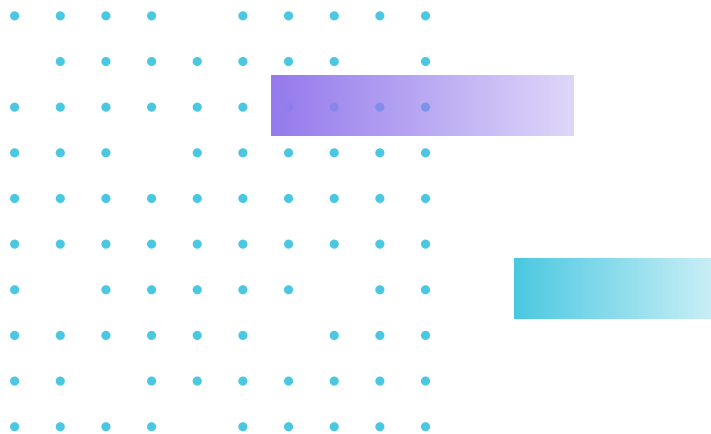
Small Yet Powerful

Focused mainly on surveillance only, less extra parts allow for smaller, less intrusive housings.



Cost Effective

Lower costs to provide more competitive offerings.





Network Cameras

COMPETITIVE Series

[BACK TO CONTENTS](#) 



| Model | FD9388-HTV | FD9368-HTV | IB9388-HT | IB9368-HT | IT9388-HT |
|-----------------------------------|--|--|--|--|--|
| SMP 88 / 2MP 68 Series | Outdoor Dome | | Bullet | | Turret |
| Camera Features | | | | | |
| Sensor Type | 1/2.7" Progressive CMOS | 1/2.9" Progressive CMOS | 1/2.7" Progressive CMOS | 1/2.9" Progressive CMOS | 1/2.7" Progressive CMOS |
| Lens Type/ Focal Length/ F-number | Motorized/ 2.8 ~ 12 mm/ F1.4 ~ F2.8 | Motorized/ 2.8 ~ 12 mm/ F1.4 ~ F2.8 | Motorized/ 2.8 ~ 12 mm/ F1.4 ~ F2.8 | Motorized/ 2.8 ~ 12 mm/ F1.4 ~ F2.8 | Motorized/ 2.8 ~ 12 mm/ F1.4 ~ F2.8 |
| Field of View | 90° ~ 30° (H) 65° ~ 23° (V) | 93° ~ 32° (H) 50° ~ 18° (V) | 90° ~ 30° (H) 65° ~ 23° (V) | 93° ~ 32° (H) 50° ~ 18° (V) | 90° ~ 30° (H) 65° ~ 23° (V) |
| Day/ Night | • | • | • | • | • |
| IR Illuminators | 30 m, IR LED*2 | 30 m, IR LED*2 | 30 m, IR LED*2 | 30 m, IR LED*2 | 30 m, IR LED*2 |
| Min. Illumination | 0.035 lux @ F1.4 (Color) <0.005 lux @ F1.4 (B/W) 0 lux with IR illumination on | 0.055 lux @ F1.4 (Color) <0.005 lux @ F1.4 (B/W) 0 lux with IR illumination on | 0.035 lux @ F1.4 (Color) <0.005 lux @ F1.4 (B/W) 0 lux with IR illumination on | 0.055 lux @ F1.4 (Color) <0.005 lux @ F1.4 (B/W) 0 lux with IR illumination on | 0.035 lux @ F1.4 (Color) <0.005 lux @ F1.4 (B/W) 0 lux with IR illumination on |
| Max. Resolution/ Frame Rate | 20 fps @ 2560x1920 | 30 fps @ 1920x1080 | 20 fps @ 2560x1920 | 30 fps @ 1920x1080 | 20 fps @ 2560x1920 |
| WDR Technology* | WDR Pro | WDR Pro | WDR Pro | WDR Pro | WDR Pro |
| On-board Storage | microSD/SDHC/SDXC card slot | microSD/SDHC/SDXC card slot | microSD/SDHC/SDXC card slot | microSD/SDHC/SDXC card slot | microSD/SDHC/SDXC card slot |
| Video/ Audio/ Network | | | | | |
| Video Compression | Triple-Codec (H.265/H.264/MJPEG) | Triple-Codec (H.265/H.264/MJPEG) | Triple-Codec (H.265/H.264/MJPEG) | Triple-Codec (H.265/H.264/MJPEG) | Triple-Codec (H.265/H.264/MJPEG) |
| Audio | One-way Audio | One-way Audio | - | - | One-way Audio |
| Digital Input/ Output | - | - | - | - | - |
| ONVIF | Profile G/S/T | Profile G/S/T | Profile G/S/T | Profile G/S/T | Profile G/S/T |
| Solution Integration | | | | | |
| Security | Trend Micro IoT Security | Trend Micro IoT Security | Trend Micro IoT Security | Trend Micro IoT Security | Trend Micro IoT Security |
| VCA | - | - | - | - | - |
| General | | | | | |
| Power Input/ Consumption | PoE/ Max. 12.95 W | PoE/ Max. 12.95 W | PoE/ Max. 12.95 W | PoE/ Max. 12.95 W | PoE/ Max. 9.8 W |
| Housing | IP66, IK10 | IP66, IK10 | IP66, IK10 (housing) | IP66, IK10 (housing) | IP66, IK10 (Housing) |
| Dimensions | ø 133 x 104 mm | ø 133 x 104 mm | 85 x 85 x 214.5 mm | 85 x 85 x 214.5 mm | ø 120 x 91 mm |
| Operating Temperature | -30°C ~ 60°C (-22°F ~ 140°F) | -30°C ~ 60°C (-22°F ~ 140°F) | -30°C ~ 60°C (-22°F ~ 140°F) | -30°C ~ 60°C (-22°F ~ 140°F) | -30°C ~ 60°C (-22°F ~ 140°F) |
| NDA Compliance Product | • | • | • | • | • |

* All specifications are subject to change without notice.



| Model | FD9380-H | IB9380-H | IT9380-H | IT9360-H |
|-----------------------------------|---|---|---|--|
| 5MP 80/2MP 60 Series | Outdoor Dome | Bullet | Turret | |
| Camera Features | | | | |
| Sensor Type | 1/2.7" Progressive CMOS | 1/2.7" Progressive CMOS | 1/2.7" Progressive CMOS | 1/2.9" Progressive CMOS |
| Lens Type/ Focal Length/ F-number | Fixed/ 2.8 mm or 3.6 mm / F2.0 | Fixed/ 3.6 mm/ F2.0 | Fixed/ 2.8 mm or 3.6mm /F2.0 | Fixed/ 2.8 mm or 3.6 mm/ F2.0 |
| Field of View | 103° (H), 76° (V) [FD9380-H (2.8mm)] 76° (H), 59° (V) [FD9380-H (3.6mm)] | 76° (H) 59° (V) | 103° (H), 76° (V) [IT9380-H (2.8mm)] 76° (H), 59° (V) [IT9380-H (3.6mm)] | 109° (H), 59° (V) [IT9360-H (2.8mm)] 81° (H), 44° (V) [IT9360-H (3.6mm)] |
| Day/Night | • | • | • | • |
| IR Illuminators | 30 m, IR LED*2 | 30 m, IR LED*2 | 30 m, IR LED*2 | 30 m, IR LED*2 |
| Min. Illumination | 0.03 lux @ F2.0 (Color) <0.005 lux @ F2.0 (B/W) 0 lux with IR illumination on | 0.03 lux @ F2.0 (Color) <0.005 lux @ F2.0 (B/W) 0 lux with IR illumination on | 0.03 lux @ F2.0 (Color) <0.005 lux @ F2.0 (B/W) 0 lux with IR illumination on | 0.065 lux @ F2.0 (Color) <0.005 lux @ F2.0 (B/W) 0 lux with IR illumination on |
| Max. Resolution/ Frame Rate | 20 fps @ 2560x1920 | 20 fps @ 2560x1920 | 20 fps @ 2560x1920 | 30 fps @ 1920x1080 |
| WDR Technology* | WDR Pro | WDR Pro | WDR Pro | WDR Pro |
| On-board Storage | microSD / SDHC / SDXC card slot | microSD / SDHC / SDXC card slot | microSD / SDHC / SDXC card slot | microSD / SDHC / SDXC card slot |
| Video/ Audio/ Network | | | | |
| Video Compression | Triple-Codec (H.265/H.264/MJPEG) | Triple-Codec (H.265/H.264/MJPEG) | Triple-Codec (H.265/H.264/MJPEG) | Triple-Codec (H.265/H.264/MJPEG) |
| Audio | - | - | One-way Audio | One-way Audio |
| Digital Input/ Output | - | - | - | - |
| ONVIF | Profile G/S/T | Profile G/S/T | Profile G/S/T | Profile G/S/T |
| Solution Integration | | | | |
| Security | Trend Micro IoT Security | Trend Micro IoT Security | Trend Micro IoT Security | Trend Micro IoT Security |
| VCA | - | - | - | - |
| General | | | | |
| Power Input/ Consumption | PoE/ Max. 6.49 W | PoE/ Max. 6.49 W | PoE/ Max. 6 W | PoE/ Max. 6 W |
| Housing | IP66, IK10 (housing) | IP66, IK10 (housing) | IP66, IK10 (housing) | IP66, IK10 (housing) |
| Dimensions | ø 117 x 90 mm | ø 91 x 177 mm | ø 105 x 83 mm | ø 105 x 83 mm |
| Operating Temperature | -30°C ~ 60°C (-22°F ~ 140°F) | -30°C ~ 60°C (-22°F ~ 140°F) | -20°C ~ 60°C (-4°F ~ 140°F) | -20°C ~ 60°C (-4°F ~ 140°F) |
| NDA Compliance Product | • | • | • | • |

* All specifications are subject to change without notice.



| Model | FD9366-HV | FD9166-HN |
|-----------------------------------|--|--|
| 2MP Mini Dome 66 Series | Outdoor Dome | Indoor Dome |
| Camera Features | | |
| Sensor Type | 1/2.9" Progressive CMOS | 1/2.9" Progressive CMOS |
| Lens Type/ Focal Length/ F-number | Fixed/ 2.8 mm/ F1.8 Fixed/ 3.6mm/ F2.0 | Fixed/ 2.8 mm/ F1.8 Fixed/ 3.6mm/ F2.0 |
| Field of View | 108° (H), 60° (V) [FD9366-HV (2.8mm)] 89° (H), 47° (V) [FD9366-HV (3.6mm)] | 109° (H), 59° (V) [FD9166-HN (2.8mm)] 89° (H), 47° (V) [FD9166-HN (3.6mm)] |
| Day/ Night | • | • |
| IR Illuminators | 20 m, IR LED*2 | 10 m, IR LED*4 |
| Min. Illumination | FD9366-HV (2.8mm): 0.13 lux @ F1.8 (Color)/ 0.01 lux @ F1.8 (B/W) 0 lux with IR illumination on FD9366-HV (3.6mm): 0.15 lux @ F2.0 (Color)/ 0.01 lux @ F2.0 (B/W) 0 lux with IR illumination on | FD9166-HN (2.8mm): 0.07 lux @ F1.8 (Color)/ 0.01 lux @ F1.8 (B/W) 0 lux with IR illumination on FD9166-HN (3.6mm): 0.16 lux @ F2.0 (Color)/ 0.01 lux @ F2.0 (B/W) 0 lux with IR illumination on |
| Max. Resolution/ Frame Rate | 30 fps @ 1920x1080 | 30 fps @ 1920x1080 |
| WDR Technology* | WDR Pro | WDR Pro |
| On-board Storage | microSD/ SDHC/ SDXC card slot | microSD/ SDHC/ SDXC card slot |
| Video/ Audio/ Network | | |
| Video Compression | Triple-Codec (H.265/ H.264/ MJPEG) | Triple-Codec (H.265/ H.264/ MJPEG) |
| Audio | One-way Audio | One-way Audio |
| Digital Input/ Output | 1/1 | 1/0 |
| ONVIF | Profile G/S/T | Profile G/S/T |
| Solution Integration | | |
| Security | Trend Micro IoT Security | Trend Micro IoT Security |
| VCA | - | - |
| General | | |
| Power Input/ Consumption | PoE/ Max. 5.5 W | PoE/ Max. 5.5 W |
| Housing | IP66, IP67, IK10, NEMA 4X | - |
| Dimensions | 98 x 54 x 111 mm | ø 90 x 50 mm |
| Operating Temperature | -25°C ~ 60°C (-13°F~ 140°F) | -10°C ~ 55°C(14°F~ 131°F) |
| NDA Compliance Product | • | • |

* All specifications are subject to change without notice.



FD9369



IB9369



FD9182-H

| 2MP Smart Motion 69 Series | Outdoor Dome | Bullet | Recessed - 5 Megapixel |
|-----------------------------------|---|---|--|
| Camera Features | | | |
| Sensor Type | 1/3.1" Progressive CMOS | 1/3.1" Progressive CMOS | 1/2.7" progressive CMOS |
| Lens Type/ Focal Length/ F-number | Fixed/ 2.8 mm / F2.0 | Fixed/ 2.8 mm/ F2.0 Fixed/ 3.6 mm/ F2.2 | Fixed/ 2.8 mm/ F2.0 |
| Field of View | 116° (H) 65° (V) | 118° (H), 65° (V) [IB9369 (2.8 mm)] 90° (H), 49° (V) [IB9369 (3.6 mm)] | 103° (H) 76° (V) |
| Day/ Night | • | • | • |
| IR Illuminators | 30 m, IR LED*1 | 30 m, IR LED*1 | - |
| Min. Illumination | 0.08 lux @ F2.0 (Color) <0.005 lux @ F2.0 (B/W) 0 lux with IR illumination on | IB9369 (2.8 mm): 0.08 lux @ F2.0 (Color)<0.005 lux @ F2.0 (B/W) 0 lux with IR illumination on IB9369 (3.6 mm): 0.1 lux @ F2.2 (Color)<0.005 lux @ F2.2 (B/W) 0 lux with IR illumination on | 0.03 lux @ F2.0 (Color) <0.005 lux @ F2.0 (B/W) |
| Max. Resolution/ Frame Rate | 30 fps @ 1920x1080 | 30 fps @ 1920x1080 | 20 fps @ 2560x1920 |
| WDR Technology* | WDR Enhanced | WDR Enhanced | WDR Pro |
| On-board Storage | microSD/ SDHC/ SDXC card slot | microSD/ SDHC/ SDXC card slot | microSD/SDHC/SDXC card slot |
| Video/ Audio/ Network | | | |
| Video Compression | Triple-Codec (H.265/ H.264/ MJPEG) | Triple-Codec (H.265/ H.264/ MJPEG) | Triple-Codec (H.265/H.264/MJPEG) |
| Audio | One-way Audio | - | One-way Audio |
| Digital Input/ Output | - | - | - |
| ONVIF | Profile G/S/T | Profile G/S/T | Profile G/S/T |
| Solution Integration | | | |
| Security | - | - | Trend Micro IoT Security |
| VCA | - | - | - |
| General | | | |
| Power Input/ Consumption | PoE: Max. 6 W DC 12V: Max. 5.1 W | PoE: Max. 6 W DC 12V: Max. 5.1 W | PoE/ Max. 3.6 W |
| Housing | IP66, IK10 (housing) | IP66, IK10 (housing) | IK10(housing) |
| Dimensions | ø 110 x 85 mm | ø 91 x 182 mm | ø 82 x 122 mm |
| Operating Temperature | -30°C ~ 55°C (-22°F ~ 131°F) | -30°C ~ 55°C (-22°F ~ 131°F) | -10°C ~ 50°C (14°F ~ 140°F) |
| NDA Compliance Product | • | • | • |

* All specifications are subject to change without notice.

[BACK TO CONTENTS](#)



FE9380-HV



NEW

FE9180-H-v2

| 360° Panoramic Cameras | 360° Fisheye Cameras - 5 Megapixel | |
|-----------------------------------|---|--|
| Camera Features | | |
| Sensor Type | 1/2.7" Progressive CMOS | 1/2.7" Progressive CMOS |
| Lens Type/ Focal Length/ F-number | Fixed/ 1.16 mm/ F2.25 | Fixed/ 1.16 mm/ F2.25 |
| Field of View | 180° (H) 180° (V) | 180° (H) 180° (V) |
| Day/ Night | • | • |
| IR Illuminators | 10 m, IR LED*4 | - |
| Min. Illumination | 0.05 lux @ F2.25 (Color) <0.005 lux @ F2.25 (B/W) 0 lux with IR illumination on | 0.05 lux @ F2.25 (Color) <0.005 lux @ F2.25 (B/W) |
| Max. Resolution/ Frame Rate | 30 fps @ 1920x1920 | 30 fps @ 1920x1920 |
| WDR Technology* | WDR Pro | WDR Pro |
| On-board Storage | microSD/SDHC/SDXC card slot | microSD/SDHC/SDXC card slot |
| Video/ Audio/ Network | | |
| Video Compression | Triple-Codec (H.265/H.264/MJPEG) | Triple-Codec (H.265/H.264/MJPEG) |
| Audio | One-way Audio | One-way Audio |
| Digital Input/ Output | - | - |
| ONVIF | Profile G/S/T | Profile G/S/T |
| Solution Integration | | |
| Security | Trend Micro IoT Security | Trend Micro IoT Security |
| VCA | - | - |
| General | | |
| Power Input/ Consumption | PoE/ Max. 12 W | PoE/ Max. 4.6 W |
| Housing | IP66, IK10 | - |
| Dimensions | ø 150 x 68.2 mm | ø 94 x 35 mm |
| Operating Temperature | -30°C ~ 60°C (-22°F ~ 140°F) | -10°C ~ 50°C (14°F ~ 122°F) |
| NDA Compliance Product | • | • |

* All specifications are subject to change without notice.



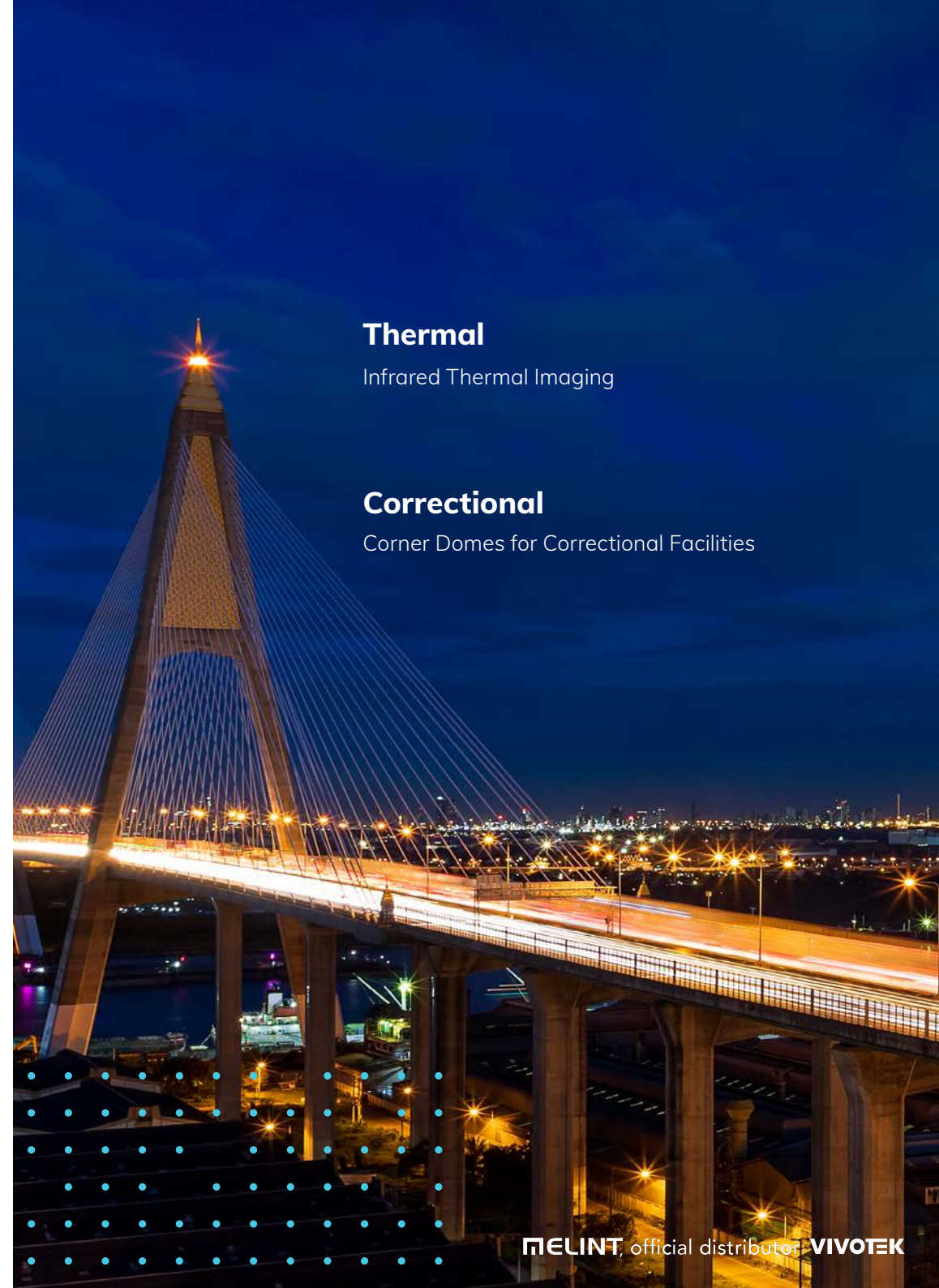
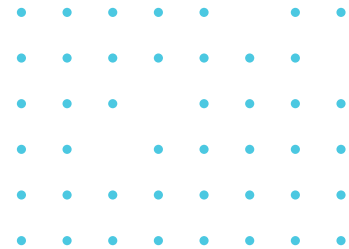
| Model | CC9380-HV | CC9381-HV | CC9160-H | CC9160-H(HS) |
|-------|-----------|-----------|----------|--------------|
|-------|-----------|-----------|----------|--------------|

| 180° Panoramic Cameras | 5 Megapixel | | 2 Megapixel | |
|-----------------------------------|---|---|-------------------------------------|-------------------------------------|
| Camera Features | | | | |
| Sensor Type | 1/2.7" Progressive CMOS | 1/2.7" Progressive CMOS | 1/2.8" Progressive CMOS | 1/2.8" Progressive CMOS |
| Lens Type/ Focal Length/ F-number | Fixed/ 1.45 mm/ F2.2 | Fixed / 1.45 mm/ F2.2 | Fixed/ 1.66 mm/ F1.95 | Fixed/ 1.66 mm/ F1.95 |
| Field of View | 180° (H) 120° (V) | 180° (H) 120° (V) | 180° (H) 100° (V) | 180° (H) 100° (V) |
| Day/ Night | • | • | - | - |
| IR Illuminators | - | 15 m | - | - |
| Min. Illumination | 0.11 lux @ F2.2 (Color) 0.01 lux @ F2.2 (B/W) | 0.11 lux @ F2.2 (Color) 0.01 lux @ F2.2 (B/W) 0 lux with IR illumination on | 0.03 lux @ F1.95 (Color) | 0.03 lux @ F1.95 (Color) |
| Max. Resolution/ Frame Rate | 20 fps @ 2560x1920 (WDR on) 30 fps @ 2560x1920 (WDR off) | 20 fps @ 2560x1920 (WDR on) 30 fps @ 2560x1920 (WDR off) | 30 fps @ 1920x1080 | 30 fps @ 1920x1080 |
| WDR Technology* | WDR Pro | WDR Pro | WDR Pro | WDR Pro |
| On-board Storage | microSD/SDHC/SDXC card slot | microSD/SDHC/SDXC card slot | microSD/SDHC/SDXC card slot | microSD/SDHC/SDXC card slot |
| Video/ Audio/ Network | | | | |
| Video Compression | Triple-Codec (H.265/H.264/MJPEG) | Triple-Codec (H.265/H.264/MJPEG) | Triple-Codec (H.265/H.264/MJPEG) | Triple-Codec (H.265/H.264/MJPEG) |
| Audio | One-way Audio | One-way Audio | One-way Audio | - |
| Digital Input/ Output | - | - | - | - |
| ONVIF | Profile G/S/T | Profile G/S/T | Profile G/S/T | Profile G/S/T |
| Solution Integration | | | | |
| Security | Trend Micro IoT Security | Trend Micro IoT Security | Trend Micro IoT Security | Trend Micro IoT Security |
| VCA | - | - | - | - |
| General | | | | |
| Power Input/ Consumption | PoE/ Max. 5 W | PoE/ Max. 9.12 W | PoE/ Max. 5 W | PoE/ Max. 5 W |
| Housing | IP66, IK10 | IP66, IK10 | - | - |
| Dimensions | 115 x 65 x 59 mm | 160 x 72 x 60 mm (Dome to rear panel) 39 mm (Flat to rear panel) | 147 x 61 x 41 mm (with bracket) | 868 x 49.3 x 28 mm |
| Operating Temperature | -30°C ~ 50°C (-22°F ~ 122°F) | -30°C ~ 50°C (-22°F ~ 122°F) | -10°C ~ 45°C (14°F ~ 113°F) | -10°C ~ 45°C (14°F ~ 113°F) |
| NDA Compliance Product | • | • | • | • |

* All specifications are subject to change without notice.

Application Specific Solutions

Network Surveillance Products Designed for Distinct User Scenarios.



Thermal

Infrared Thermal Imaging

Correctional

Corner Domes for Correctional Facilities

Counting

People Counting Solutions for Retail & Transportation

Facial Recognition

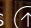
Hands Free Solution for Access Control

Network Audio

Audio for Security

Media Converters

Effortless Solutions for Converting Media

[BACK TO CONTENTS](#) 

Application Solution

Thermal Bullet Cameras

Infrared Thermal Imaging



Long Distance Monitoring

VIVOTEK thermal cameras offer different lens options to allow users to easily adapt to different detection scenarios.



Robust Design for Outdoor Environments

Cameras are IP66/IP67 rated and equipped with NEMA 4X housings. The unique lens guard design provides extra protection from tampering and objects.



Video Analytics for Perimeter Protection

VIVOTEK thermal cameras, with video analytic features such as line crossing and field detection, make perimeter protection both simple and efficient.



Normal Camera

Thermal Camera





Thermal Camera



TB9330-E



TB9331-E

| Model |  | TB9330-E |  | TB9331-E |
|-----------------------------------|---|--|---|--|
| Thermal Bullet Cameras | | | | |
| Camera Features | | | | |
| Sensor Type | | Uncooled Vox Infrared Detector | | Uncooled Vox Infrared Detector |
| Lens Type/ Focal Length/ F-number | | Fixed Thermal Lens/ 8.8 mm,19 mm 35 mm, 50 mm/ F1.0 | | Fixed Thermal Lens/ 8.8 mm,19 mm 35 mm, 50 mm/ F1.0 |
| Field of View | | 38.3° (H), 26.1° (V) [TB9330-E (8.8mm)] 18.3° (H), 12.3° (V) [TB9330-E (19mm)] 10° (H), 6.7° (V) [TB9330-E (35mm)] 7° (H), 4.7° (V) [TB9330-E (50mm)] | | 69.6° (H), 49.7° (V) [TB9331-E (8.8mm)] 35.7° (H), 24.2° (V) [TB9331-E (19mm)] 19.8° (H), 13.3° (V) [TB9331-E (35mm)] 14° (H), 9.3° (V) [TB9331-E (50mm)] |
| Day/ Night | | - | | - |
| IR Illuminators | | - | | - |
| Min. Illumination | | - | | - |
| Max. Resolution/ Frame Rate | | 30 fps @ 384x256 | | 30 fps @ 720x480 |
| WDR Technology* | | - | | - |
| On-board Storage | | MicroSD/ SDHC/ SDXC card slot | | MicroSD/ SDHC/ SDXC card slot |
| Video/ Audio/ Network | | | | |
| Video Compression | | Triple-Codec (H.265/ H.264/ MJPEG) | | Triple-Codec (H.265/ H.264/ MJPEG) |
| Audio | | Two-way Audio (Full duplex) | | Two-way Audio (Full duplex) |
| Digital Input/ Output | | 1/1 | | 1/1 |
| ONVIF | | Profile G/S | | Profile G/S |
| Solution Integration | | | | |
| Security | | Trend Micro IoT Security | | Trend Micro IoT Security |
| VCA | | - | | - |
| General | | | | |
| Power Input/ Consumption | | AC 24V/ DC 12V/ PoE Max. 12.5 W | | AC 24V/ DC 12V/ PoE Max. 14 W |
| Housing | | IP66, IP67, IK10, NEMA 4X | | IP66, IP67, IK10, NEMA 4X |
| Dimensions | | w/ junction box: 121 x 121 x 472 mm (8.8mm) 121 x 121 x 453 mm (19mm) 121 x 121 x 456 mm (35/50mm) | | w/ junction box: 121 x 121 x 472 mm (8.8mm) 121 x 121 x 453 mm (19mm) 121 x 121 x 456 mm (35/50mm) |
| Operating Temperature | | -50°C ~ 60°C (-58°F ~ 140°F) | | -30°C ~ 60°C (-22°F ~ 140°F) |
| NDAA Compliance Product | | - | | - |

* All specifications are subject to change without notice.

Application Solution

Correctional Facilities

Corner Dome Cameras



Designed for Correctional Institutions

Specifically made for prisons, jails, and mental institutions.



Anti-Ligature

Designed in a way to protect inmates from hanging, suicide, and other methods of self inflicted harm.





CD9381-HNTV



CD9381-HNVF2

| Model | CD9381-HNTV | CD9381-HNVF2 |
|-----------------------------------|---|--|
| Corner Dome Cameras | 5 Megapixel | |
| Camera Features | | |
| Sensor Type | 1/2.7" Progressive CMOS | 1/2.7" Progressive CMOS |
| Lens Type/ Focal Length/ F-number | Motorized/ 2.8 ~ 8 mm/ F1.8 ~ F2.78 | Fixed/ 2.4 mm/ F2.1 |
| Field of View | 95° ~ 41° (H) 69° ~ 31° (V) | 124° (H) 92° (V) |
| Day/ Night | • | • |
| IR Illuminators | 10 m, IR LED*2 | 10 m, IR LED*2 |
| Min. Illumination | 0.085 lux @ F2.1(Color) <0.005 lux, @ F2.1(B/W) 0 lux with IR illumination on | 0.07 lux @ F2.1(Color) <0.005 lux, @ F2.1(B/W) 0 lux with IR illumination on |
| Max. Resolution/ Frame Rate | 30 fps @ 2560X1920 60 fps @ 1920x1080 | 30 fps @ 2560x1920 60 fps @ 1920x1080 |
| WDR Technology* | WDR Pro | WDR Pro |
| On-board Storage | microSD/ SDHC/ SDXC card slot | microSD/ SDHC/ SDXC card slot |
| Video/ Audio/ Network | | |
| Video Compression | Triple-Codec (H.265/ H.264/ MJPEG) | Triple-Codec (H.265/ H.264/ MJPEG) |
| Audio | Two-way Audio (Full duplex) | Two-way Audio (Full duplex) |
| Digital Input/ Output | 1/1 | 1/1 |
| ONVIF | Profile G/S/T | Profile G/S/T |
| Solution Integration | | |
| Security | Secure Boot, Signed Firmware, Trend Micro IoT Security | Secure Boot, Signed Firmware, Trend Micro IoT Security |
| VCA | Smart Motion Detection, Smart VCA | Smart Motion Detection, Smart VCA |
| General | | |
| Power Input/ Consumption | AC 24V/ DC 12V/ PoE Max. 18 W | AC 24V/ DC 12V/ PoE Max. 18 W |
| Housing | IP67, IP6K9K, IK10+ | IP67, IP6K9K, IK10+ |
| Dimensions | 226 x 221 x 112 mm | 226 x 221 x 112 mm |
| Operating Temperature | -10°C ~ 55°C (14°F ~ 122°F) | -10°C ~ 55°C (14°F ~ 122°F) |
| NDAA Compliance Product | • | • |

* All specifications are subject to change without notice.

Application Solution

Counting Solution



People Counting

VIVOTEK offers highly accurate visual counting solutions for both retail and transportation industries.



Retail

Accurately obtain customer foot traffic data and effortlessly optimize store management. Furthermore with the capability to stitch multiple counting cameras together, users can efficiently manage systems covering expansive floor plans. (Recommended Product SC9133-RTL, Page70)



Transportation

Accurate Counting, combined with Deep Learning Smart Object Classification, is purpose-built for onboard rolling stock and transit vehicle applications, empowering users to receive valuable passenger-flow data and object types. (Recommended Product SC9133, Page70)





| Model | NEW SC9133-RTL | NEW SC9133 | SC8131 |
|------------------------|---|------------------------------|-----------------------------|
| | SC Series | | |
| Resolution | 30 fps @ 1792x1792 | 30 fps @ 1792x1792 | 15 fps @ 1280x784 |
| Max. Stream | 3 Streams | 3 Streams | 3 Streams |
| Mode | Day / Night | Day / Night | Day |
| WDR Technology | WDR Pro | WDR Pro | WDR Enhanced |
| Housing | IP66, IK10 | IP66, IK10 | Metal |
| Certifications | EN50155, EN45545-2, EN50121-3-2, EN50121-4, EN61373, E-Mark (R10), ECE R118 | | |
| Operating Temperature | -30°C ~ 60°C (-22°F ~ 140°F) | -30°C ~ 60°C (-22°F ~ 140°F) | -10°C ~ 40°C (14°F ~ 104°F) |
| Power Input | PoE | PoE (M12 connector) | PoE |
| Dimensions | 140 x 76 x 42 mm | 140 x 76 x 42 mm | 160 x 70 x 38 mm |
| NDA Compliance Product | ● | ● | ● |

* For fire and smoke norms compliance details, please contact VIVOTEK. Extra conditions may apply.

Maintain Crowd Occupancy with VIVOTEK Crowd Control Solution



* All specifications are subject to change without notice.

[BACK TO CONTENTS](#)

Application Solution

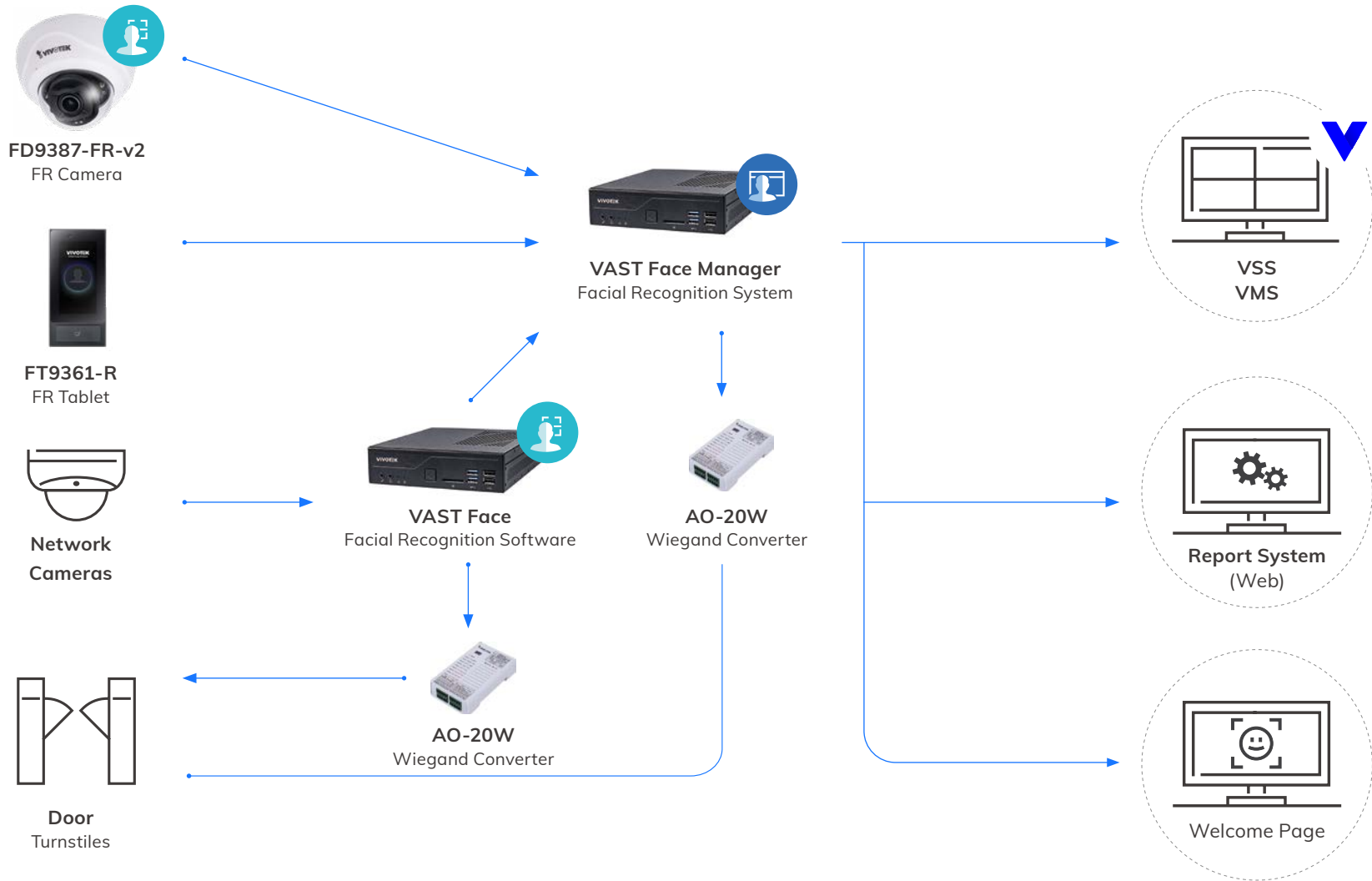
Facial Recognition

Hands Free Solution for Access Control

For the most complete protection in highly sensitive environments, VIVOTEK provides a comprehensive Facial Recognition (FR) Solution. Consisting of workstations, servers and tablets combined with a variety of cameras, VIVOTEK's Facial Recognition Solution provides immediate and accurate detection and recognition for security. Fully integrated with VIVOTEK's new VSS VMS, users can both monitor and manage facial recognition results, producing an intelligent surveillance solution for any application.



Facial Recognition Solution



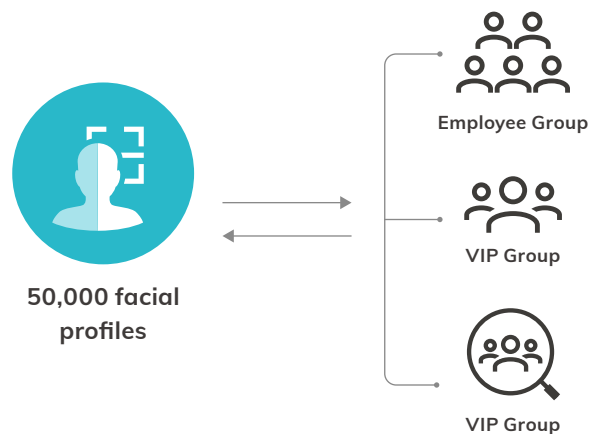


Facial Recognition

VAST Face FR Workstation

Large Capacity of Facial Profiles

Able to store up to 50,000 facial profiles. Administrators can categorize profiles into different groups and grant varied credentials to each group.



Accurate Authentication

Combine with IP cameras to capture facial images and verify in real-time, providing 99% accurate authentication.



VAST Face Workstation



Model IE9232-F

| | VAST Face Workstation |
|-------------------------------------|--|
| Hardware | Intel CPU: i7-10700 Memory: DDR4 32GB RAM, HDD: 2.5" 500GB SSD |
| OS | Linux |
| Maximum Number of Faces in Database | 50,000 |
| Maximum Number of Connected Devices | Up to 6 |
| Power Input | 100-240V AC |
| Power Consumption | Max. 90W |
| Dimensions | 240 x 210 x 57 mm |
| Weight | 1.3 kg net and 2.1 kg gross |
| Safety Certifications | CE, FCC, UL, CB, BSMI |
| Supported IP cameras | Any H.264/ H.265 RTSP IP Camera |

* All specifications are subject to change without notice.

[BACK TO CONTENTS](#) 

MELINT, official distributor **VIVOTEK**

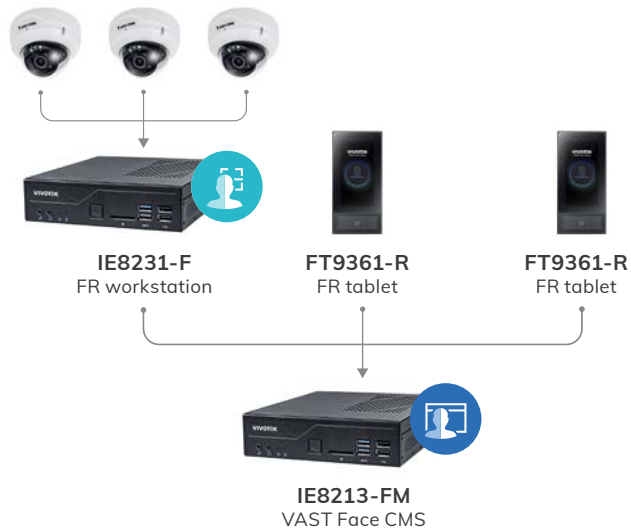


Facial Recognition

VAST Face FR CMS

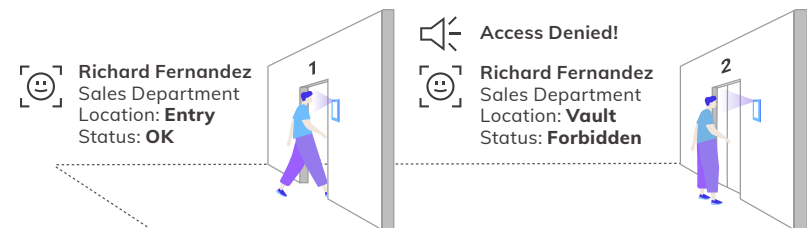
Content Management System

Capable of managing a maximum of 256 connected facial recognition devices to establish people lists, facial profiles and attendance reports.



Highly Secure

Users can define customized access authentication rules and schedules by area or user groups, providing more oversight than traditional card-based access systems.



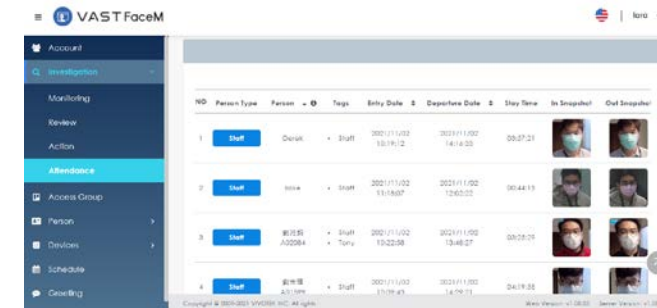
Persons of Interest (POI) Management

Users can assign each person into one or more groups for easier identification.



Rich Infographic Reports

Rich infographic reports provide decision-makers with a bigger picture and deeper understanding of people entering and leaving.



VAST Face CMS



Model

IE9281-FM

| | VAST Face Manager |
|-------------------------------------|--|
| Hardware | Intel CPU: i7-10700 Memory: DDR4-2666 32GB RAM HDD: 2.5" 500GB SSD |
| OS | Linux |
| Maximum Number of Faces in Database | 50,000 |
| Maximum Number of Connected Devices | Up to 256 |
| Power Input | 100-240V AC |
| Power Consumption | Max. 90W |
| Dimensions | 250 x 225 x 44 mm |
| Weight | 4 kg |
| Safety Certifications | CE, FCC, VCCI |

* All specifications are subject to change without notice.

[BACK TO CONTENTS](#)

Application Solution

Facial Recognition Tablet



Hands-Free Access Control

Detect facial profiles and match with profiles in the database, achieving true hands-free access control.



Accurate Authentication

Facial images are captured and verified in real-time, providing 99% accurate authentication.



Huge Capacity of Facial Profiles

Enable to store up to 50,000 facial profiles. Administrators can categorize profiles into different groups and grant varied credentials to each group.



Dual Accreditation Available

Employees must meet both facial and card reader verification in order to pass through, strengthening security to a higher level.

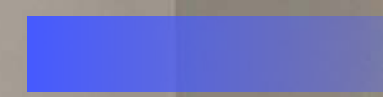
* VAST Face FR CMS license required


Model

FT9361-R

| | Facial Recognition Tablet |
|-----------------------|--|
| Hardware | Memory: 8GB ROM 1GB RAM |
| OS | Linux |
| Database Size | 50,000 Profiles (Max.) |
| Camera | Resolution: 1920x1080 IR 1.3M @1280x1080 |
| Display | IPS 6" (1440x720) |
| Build in Card Reader | 13.56Mhz Mifare DESFire EV1, EV2 |
| Recognition Distance | 0.3-1.5M |
| Power Input | PoE Class 4 (IEEE802.3at)/ DC 12V |
| Weigand | Output 24bit/26bit/36bit |
| Dimensions | 221.1 x 103.6 x 26.5 mm |
| Safety Certifications | EMC: CE , FCC ,NCC |

* All specifications are subject to change without notice.



[BACK TO CONTENTS](#) 

Application Solution

Facial Recognition Camera

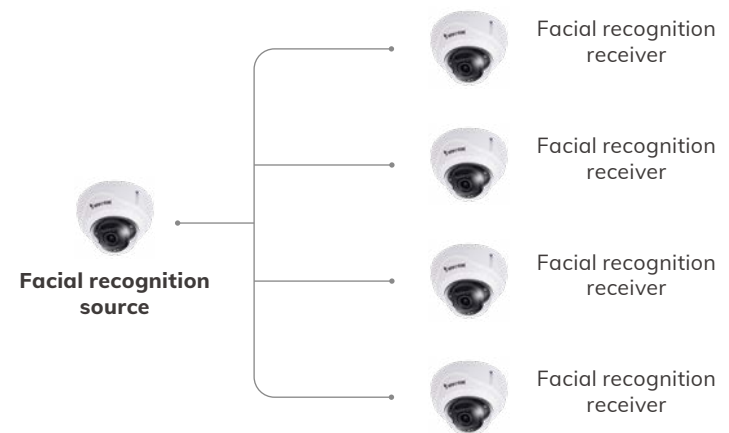
10,000 Faces on the edge

With 99% facial recognition accuracy, it is a powerful tool for accurate facial detection and person of interest control across multiple locations.



Serverless Facial Recognition Infrastructure

It can operate fully without middleware or FTP server, reducing the operational cost. With a single FD9387-FR-v2, users can store up to 10,000 facial profiles in a serverless architecture and manage/maintain the database in one camera, which will automatically synchronize with other facial recognition cameras.





Privacy mode

For enterprise or privacy sensitive regions, this protects personal privacy and prevents sending snapshots of persons of interest (POI). Instead, users can hide POI information on the web or disable picture sharing with third-party systems, which helps to safeguard user privacy and ensures that sensitive data is not shared without their consent.



Model **NEW** FD9387-FR-v2

| | Facial Recognition Camera |
|---------------------------------------|--|
| Camera Features | |
| Sensor Type | 1/2.7" Progressive CMOS |
| Lens Type/ Focal Length/ F-number | Motorized/ 2.7 ~ 13.5 mm/ F1.4 ~ F2.8 |
| Field of View | 95° ~ 30° (H) 70° ~ 23° (V) |
| Day/ Night | ● |
| IR Illuminators | 50 m, IR LED*4 |
| WDR Technology | WDR Pro |
| Application Features | |
| Facial Recognition Performance | Up to 99% accuracy ; supports recognition with mask Gender and age estimation; privacy mode |
| Numbers of Face Captures | 30 faces per second |
| Facial Recognition Profile Database | Up to 10,000 profiles |
| Automatic Create Profile for Stranger | Yes |
| Integration | ONVIF profile S event push; HTTP/ HTTPS Push in JSON format |

* All specifications are subject to change without notice.

[BACK TO CONTENTS](#)

Application Solution

Network Audio



Audio for Security

Event-triggered audio announcements to improve property security.



Automated Audio Clips

Support broadcasting live announcements or pre-recorded audio clips automatically when VSS alarm management is triggered.



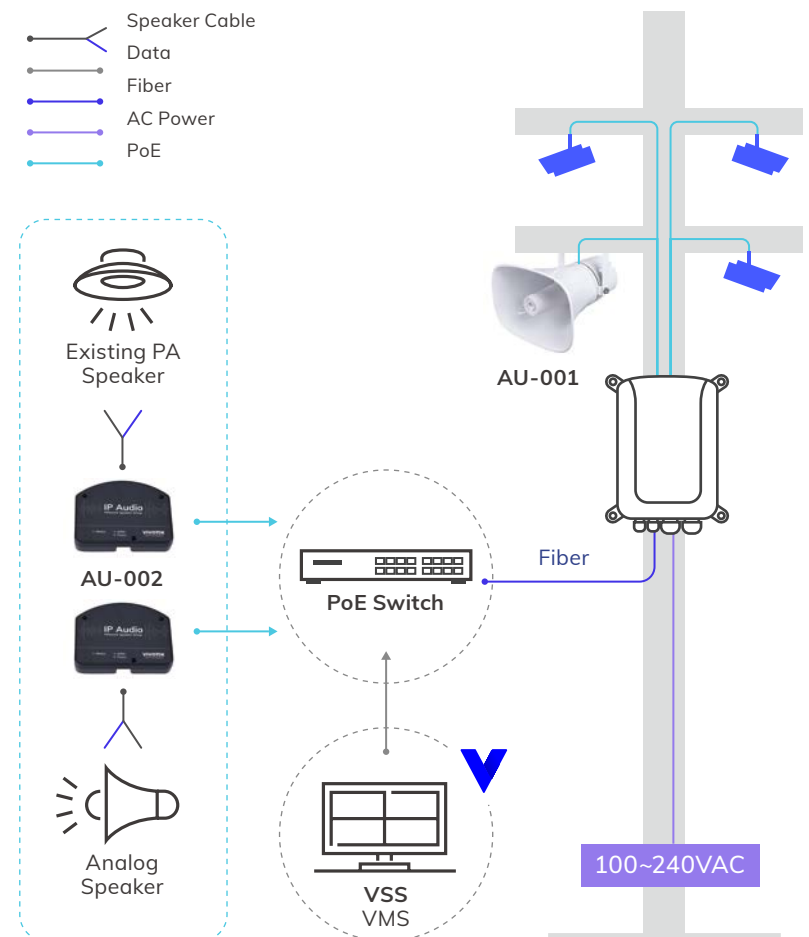
Loitering Alerts

When a person is loitering beyond a preset time limit, an audio warning can be produced.



Deter Crime and Safeguarding

Prevent financial damage from graffiti, breaking and entering, or other criminal acts through proactive audio alarms.





AU-001



AU-002

| Model | AU-001 | AU-002 |
|----------------------------|---|---|
| Network Audio Solution | Network Horn Speaker | Network Speaker Driver |
| Product Information | | |
| Average Min. power | 20 W | 20 W |
| Frequency Ranges | 330 Hz~ 8000 Hz | - |
| Max. SPL 1W / 1M | 106 dB | - |
| Microphone | 100Hz-16KHz Single point, SPL-44 ± 2db AT 2 KΩ | 100Hz-16KHz Single point, SPL-44 ± 2db AT 2 KΩ |
| Network | | |
| SIP support | RFC 3261(SIP base standard) | RFC 3261(SIP base standard) |
| Interface | WAN: RJ-45x1, 10/100Mbps Fast Ethernet port | WAN: RJ-45x1, 10/100Mbps Fast Ethernet port |
| Audio Codec | G.711 a/uLaw, G.726, G.722, G.729, iLBC, L16 | G.711 a/uLaw, G.726, G.722, G.729, iLBC, L16 |
| Support Function | Auto provision, Audio tone testing, System log | Auto provision, Audio tone testing, System log |
| Security | Password protection, IP address filter, user access log, authentication | Password protection, IP address filter, user access log, authentication |
| General | | |
| Casing | Robust aluminum, IP-66 | Plastic |
| Power | PoE+, IEEE 802.3at | PoE+, IEEE 802.3at |
| Dimensions | 280 x 200 x 280 mm | 110 x 85 x 25 mm |
| Weight | 1.95 kg | 115 g |
| Safety Certifications | CE, FCC, LVD EN62368-1 | CE, FCC, LVD EN62368-1 |

* All specifications are subject to change without notice.

[BACK TO CONTENTS](#)

Application Solution

Media Converters

Effortless Solutions for converting media



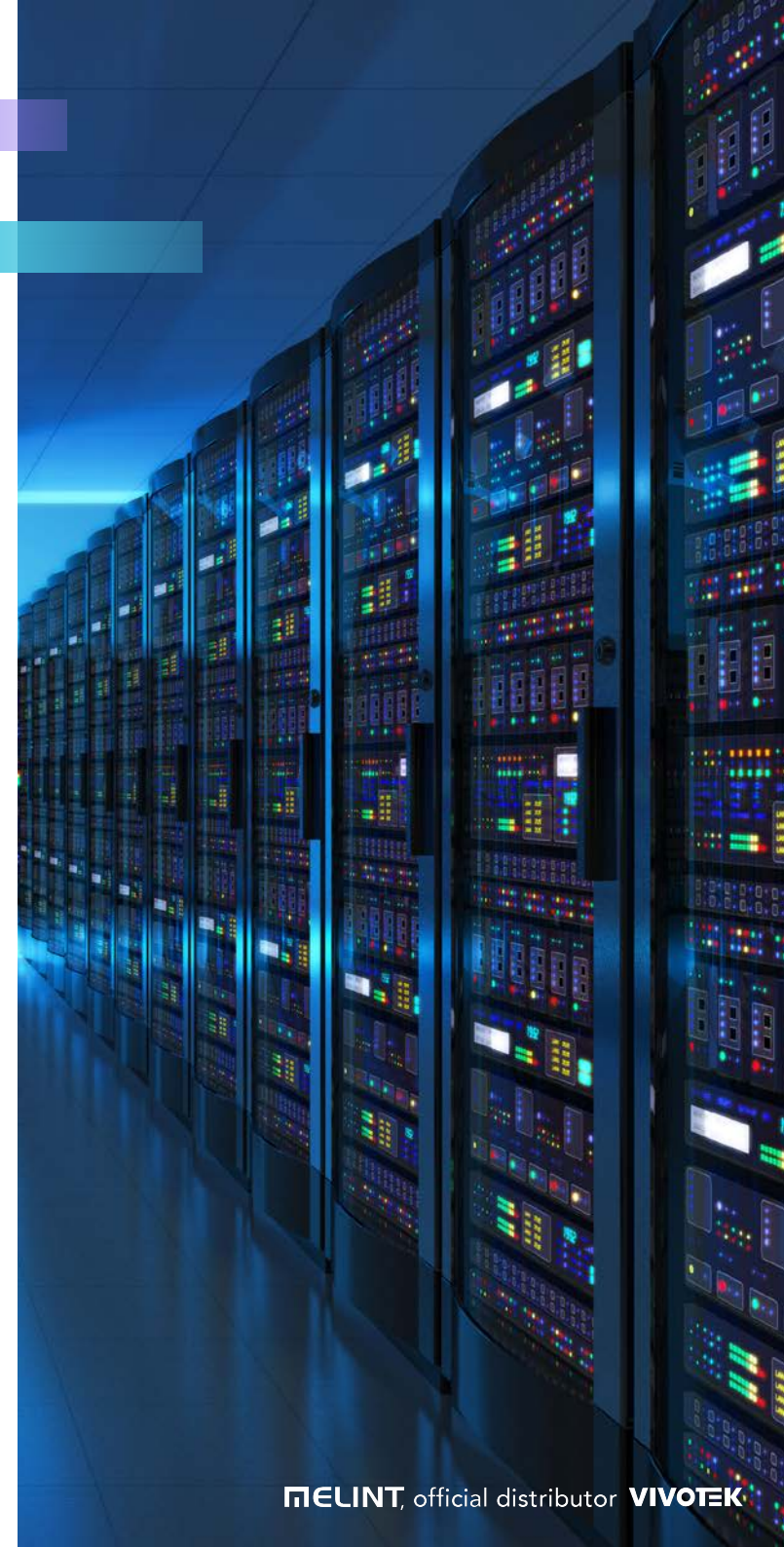
Video Receiver

Easily display network cameras live to an HD monitor.



Video Server

Enables users to bring existing analog cameras onto the IP system.





Model **NEW** RX9502

| Video Receiver | |
|---|---|
| Local Display | |
| Channels | Up to 32 channels |
| Video Output | HDMI |
| Display Resolution | 3840x2160 1920x1080 1280x720 |
| Fisheye Dewarp | • |
| Video | |
| Video Compression | H.265/ H.264/ MJPEG |
| Max. Decoding Capacity | H.265/ H.264: 3840x2160 @ 90 fps (3CH) |
| LiveView Decoding (Local) | Up to 7680x2560 |
| General | |
| Connectors | Ethernet 10/100/1000 RJ45 *1 USB 2.0 *1 (Front) USB 3.0 *1 (Back) |
| Power Input | DC 12V 0.9A |
| Power Consumption | Max. 11 W |
| Installation, Management, and Maintenance | Shepherd, VAST 2, VSS |
| Weight | 530 g |
| Dimensions | 198 x 200 x 47 mm |
| Operating Temperature | -10°C ~ 50 °C (14°F ~ 122°F) |



Model VS8100-v2

| Video Server | |
|------------------------------|---|
| Features | |
| Video Source | 1 Analog Camera Input |
| Video Modulation | NTSC/ PAL Auto Detection |
| Max. Resolution/ Frame Rate | 30 fps @ 720x480 / NTSC 25 fps @ 720x576 / PAL |
| Video/ Audio/ Network | |
| Video Compression | Dual-Codec (H.264/ MJPEG) |
| Audio | One-way Audio |
| Networking | 10/100 Mbps Ethernet |
| Serial Connectors | RS485 |
| ONVIF | Profile S |
| Solution Integration | |
| Security | Trend Micro IoT Security |
| Motion Detection | • |
| General | |
| Power Input/ Consumption | DC 12V/ Max. 3 W |
| Dimensions | 65 x 34 x 25 mm |
| Operating Temperature | 0°C ~ 50 °C (32°F ~ 122°F) |

* All specifications are subject to change without notice.

[BACK TO CONTENTS](#)

Network Video Recorders

Naming Rule

Core+ AI

Desktop NVR

Rack Mount NVR



Network Video Recorders

Naming Rule

| | | | | | | | |
|-------------------|-----------------|-----------------|-----------------|-----------------|-----------------|---|-----------------|
| ND | 9 | 3 | 2 | 2 | P | - | v2 |
| 1-2 nd | 3 rd | 4 th | 5 th | 6 th | 7 th | | 8 th |

NVR Model

| 1-2 nd Model Category | |
|----------------------------------|---|
| Code | Description |
| NR | Rack Mount Type Network Video Recorder (Include Rack Mount Kit) |
| ND | Desktop Type Network Video Recorder (Without Rack Mount Kit) |
| NV | Vehicle Type Network Video Recorder |
| RX | Network Receiver |

| 3 rd A/V Type | |
|--------------------------|-----------------------|
| NO. | Description |
| 8 | H.264 / MJPEG |
| 9 | H.265 / H.264 / MJPEG |

| 4 th Amount of Channel | |
|-----------------------------------|------------------------------------|
| NO. | Description |
| 2 | 2 to the power of 2 = 4 Channels |
| 3 | 2 to the power of 3 = 8 Channels |
| 4 | 2 to the power of 4 = 16 Channels |
| 5 | 2 to the power of 5 = 32 Channels |
| 6 | 2 to the power of 6 = 64 Channels |
| 7 | 2 to the power of 7 = 128 Channels |

| 5 th ND/NV/RX Series - HDDs | |
|--|-------------|
| NO. | Description |
| 0 | No HDD |
| 1 | 1 HDD |
| 2 | 2 HDDs |
| 3 | 3 HDDs |
| 4 | 4 HDDs |
| 5 | 5 HDDs |
| 6 | 6 HDDs |
| 7 | 7 HDDs |
| 8 | 8 HDDs |
| 9 | 9 HDDs |

| 5 th NR Series - HDD Group | |
|---------------------------------------|-------------------|
| NO. | Description |
| 8 | 8 HDD for 1 Group |

| 6 th Revision for ND/ NV/ RX Series | |
|--|---------------|
| NO. | Description |
| 1-9 | Not Specified |

| 6 th Revision for NR* Series | |
|---|---------------------------------------|
| NO. | Description |
| 1-9 | Multiplied by the Number of HDD Group |

*e.g., 5th no.=8; 6th no.=2, Total HDD= 8 x 2= 16

| 7 th Extension/ Feature for ND/ NV/ RX | |
|---|----------------------|
| NO. | Description |
| P | PoE |
| W | Wireless Application |

| 7 th Extension for NR/ NS Series | |
|---|-------------|
| NO. | Description |
| (A) | New version |

| 8 th Digit Extension | |
|---------------------------------|-------------|
| NO. | Description |
| v | 1 - 99 |

SVC Definition

| S SERIES | SUPREME |
|-------------|--|
| | Definition |
| | Top of the line, cutting edge technology, Large-Huge Systems |

| V SERIES | VERSATILE |
|-------------|---|
| | Definition |
| | Advanced and feature rich for most applications, Medium-Large Systems |

| C SERIES | COMPETITIVE |
|-------------|--|
| | Definition |
| | Cost effective professional surveillance, Small-Medium Systems |

[BACK TO CONTENTS](#) 

Network Video Recorders

Core+ AI

AI Enhanced Firmware for NVR



VIVOTEK's Core+ ND series network video recorder firmware was embedded with VIVOTEK technology featuring cybersecurity management, Smart VCA event search, Smart Search II functions, and counting solutions. Now next generation Core+ AI firmware has raised the bar even higher. Already enabled with all Core+ features, Core+ AI NVR's add **Deep Search**, utilizing AI to provide the fastest, smartest and most efficient post-event search user experience. VIVOTEK cameras enabled with Vision Object Analytics provide the metadata used by **Deep Search's** AI. **Deep Search** is comprised of two main functions: **Attribute Search** and **Scene Search**.

*Some models may not include all Core+ features. Be sure to check the specific model's specifications

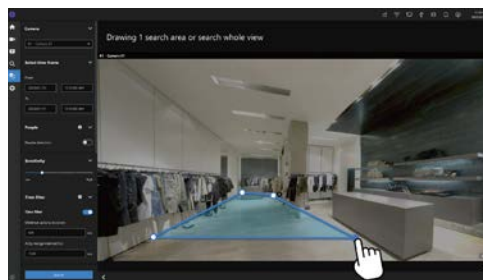
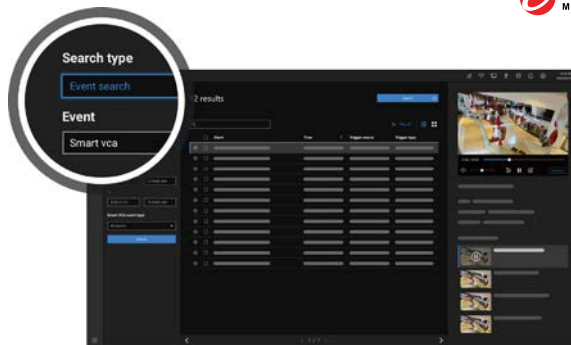
NVR
CORE+ AI

Deep Search: Attribute Search

Attribute Search uses people and vehicles as search criteria utilizing multiple attributes (e.g., gender, age group, clothing or car color, vehicle type, etc.) to quickly and accurately find the person / vehicle of interest.

Deep Search: Scene Search

Scene search allows users to search a specific camera's video footage using line crossing detection, intrusion detection, or loitering detection.



Cybersecurity Management

Core+ NVRs support Trend Micro IoT Security, empowering the NVRs to automatically detect and prevent credential-based attacks and block suspicious events. VIVOTEK network cameras enabled with Trend Micro IoT Security can also connect with Core+ NVRs, enabling the NVRs to receive instant notifications of security events from the cameras and to understand the type and status of cyber-attacks, as well as to acquire attack information from cameras.

Smart VCA Event Search

Core+ NVRs support alarm management and event search of VIVOTEK's deep-learning video analytics technology - Smart VCA. VCA rules and data such as people-tracking frames and motion-detection frames can be shown on live or playback video display. Users can search by single or multiple events, playback triggered events and then export these search results to video clips.

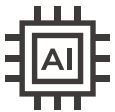
Counting Solution

Core+ NVRs support VIVOTEK's 3D people counting cameras and cloud service software – VIVOCloud. Counting rules can be shown on the NVR's video display from counting cameras. Furthermore, all of the counting data can be stored automatically to the NVR's hard drive as well as be acquired by VIVOCloud. Users can also build customized counting reports through the VIVOCloud interface. This enables tracking of in-store customer flow and benchmarking of campaign performance between different stores or across different time frames to make business more efficient.

Network Video Recorders

Desktop NVR

Intelligent Features and Cybersecurity Protection, Ideal for Middle-Large Scale Systems and General Surveillance.



Core+ AI*

VIVOTEK Core+ AI supporting **Deep Search**, Smart VCA, Smart Search II and Cybersecurity Management, offering a faster and smarter user experience.

* for selected models



4K Display

H.265/ H.264 supported, 4K decoding and local display for clear and vivid monitoring.



RAID Supported*

RAID 0/1/5 configuration provides further data security in case of a rare event hard drive failure.

* Available on selected models



CMS Management

Supports VIVOTEK's VSS CMS management, empowering users to set up and manage surveillance systems with ease. Check specifications of different VSS version.



Retail



City Surveillance



Model  **ND9442P/ ND9542P**  **NEW** **ND9326P/ ND9426P**  **ND9323P/ ND9425P**  **ND9213P**

| Network Video Recorders | | | | |
|---|--|---|--|--|
| Local Display | | | | |
| Channels | Up to 16/32 channels | Up to 8/16 channels | Up to 8/16 channels | Up to 4 channels |
| Video Output | HDMI/VGA | HDMI/VGA | HDMI/VGA | HDMI/VGA |
| Display Resolution | 3840x2160/ 1920x1080/ 1280x720 | 3840x2160/ 1920x1080/ 1280x720 | 3840x2160/ 1920x1080/ 1280x720 | 3840x2160/ 1920x1080/ 1280x720 |
| Fisheye Dewarp | Local: 10,1P,1R, 103R, 108R, 1P3R Web: 10, 1R, 1P | Local: 10, 1P,1R, 103R, 108R, 1P3R Web: 10, 1R, 1P | Local: 10, 1R, 103R, 108R Web: 10, 1R, 1P | Local: 10, 1R, 103R, 108R Web: 10, 1R, 1P |
| Video/ Record | | | | |
| Video Compression | H.265/H.264/MJPEG | H.265/H.264/MJPEG | H.265/H.264/MJPEG | H.265/H.264/MJPEG |
| Max. Decoding Capability | H.265/H.264: 3840x2160 @ 90 fps | H.265/H.264: 3840x2160 @ 120 fps | H.265/H.264: 3840x2160 @ 30 fps | H.265/H.264: 3840x2160 @ 30 fps |
| Decoding Resolution (Local) | Up to 7680x2560 | Up to 7680x2560 | Up to 3840x2160 | Up to 3840x2160 |
| Recording Throughput | 192 Mbps | 192 Mbps | 64 Mbps | 64 Mbps |
| Storage/ General | | | | |
| Hard Disk | 3.5" SATA HDD*4 | 3.5" SATA HDD*2 | 3.5" SATA HDD*2 | 3.5" SATA HDD*1 |
| RAID | RAID 0, 1, 5 | RAID 0, 1 | RAID 0, 1 | - |
| PoE | 16x 802.3at/af Compliant PoE Ports (Total Max. 200 W) | 8/16x 802.3at/af Compliant PoE Ports (Total Max. 120 W/200 W) | 8/16x 802.3at/af Compliant PoE Ports (Total Max. 120 W/200 W) | 4x 802.3at/af Compliant PoE Ports (Total Max. 50 W) |
| Connectors | Ethernet 10/100/1000 RJ45 *2 Alarm In *16, Alarm Out *8 USB 2.0 *2, USB 3.0 *1 Audio Output *1 Audio Input *1 (Reserved) RS485 (Reserved) | Ethernet 10/100/1000 RJ45 *2 Alarm In *4, Alarm Out *1 USB 2.0 *2, USB 3.0 *1 Audio Output *1 Audio Input *1 (Reserved) | Ethernet 10/100/1000 RJ45 *1 Alarm In *4, Alarm Out *1 USBw 2.0 *1, USB 3.0 *1 Audio Output *1 Audio Input *1 (Reserved) | Ethernet 10/100 RJ45 *1 Alarm In *4, Alarm Out *2 USB 2.0 *1, USB 3.0 *1 Audio Output *1 Audio Input *1 (Reserved) |
| Power Input | AC 100 ~ 240V/ 50 ~ 60Hz | AC 100 ~ 240V/ 50 ~ 60Hz | AC 100 ~ 240V/ 50 ~ 60Hz | DC 48V 2A |
| Power Consumption | Max. 300 W | Max. 190 W/ 270W | Max. 175 W/255 W | Max. 96 W |
| Installation, Management, and Maintenance | VSS, VAST 2, Shepherd, VIVOCLOUD, iViewer (iOS/Android) | VSS, VAST 2, Shepherd, VIVOCLOUD, iViewer (iOS/Android) | VSS, VAST 2, Shepherd, VIVOCLOUD, iViewer (iOS/Android) | VSS, VAST 2, Shepherd, VIVOCLOUD, iViewer (iOS/Android) |
| Dimensions | 432 x 421 x 66 mm | 365 x 315 x 44 mm | 366 x 320 x 46 mm | 264 x 247 x 43 mm |
| Advanced Features | | | | |
| Smart VCA Event Search | ● | ● | ● | ● |
| Deep Search | ● | ● | - | - |
| Cybersecurity Management | ● | ● | ● | ● |
| Trend Micro IoT Security | ● | ● | ● | ● |
| NDA Compliance Product | ● | ● | ● | ● |

* All specifications are subject to change without notice.

Network Video Recorders

Rack Mount NVR

Super Performance and Reliability for Large Scale Systems



Enhanced Decoding Capability

H.265/H.264 supported with enhanced decoding capability for high resolution video cameras up to 20MP.



Hot-Swappable HDD

Supports Hot-Swappable HDD bays with RAID 0/1/5/6/10/50/60, and NVR failover for reliable and secure recording data.



Embedded VAST Security Station

Built-in VIVOTEK VAST Security Station supports multiple VIVOTEK solutions such as Smart VCA, Cybersecurity Management, Transportation, and License Plate Recognition.



Data Magnet Solution

Embedded free Data Magnet for easy integration with 3rd party devices and software.





Industry



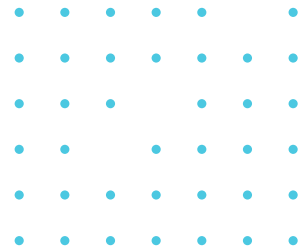
Transportation



| Model |  NEW | NR9682-v3 |  NEW | NR9581-v3 |
|---|--|--|--|--|
| Rack Mount NVR | | | | |
| Display | | | | |
| Channels | | 64 channels (expandable to 192-CH) | | 32 channels (expandable to 128-CH) |
| Video Output | | HDMI/DP/DVI/VGA | | HDMI/DP/DVI/VGA |
| Display Resolution | | HDMI: 4096x2160/ DP: 7680x4320 DVI: 1920x1200/ VGA: 1920x1200 | | HDMI: 4096x2160/ DP: 7680x4320 DVI: 1920x1200/ VGA: 1920x1200 |
| Fisheye Dewarp | | 10, 1P, 1R, 1O3R, 4R, 2P, 4R Pro, 108R and Fisheye Auto-Pan | | 10, 1P, 1R, 1O3R, 4R, 2P, 4R Pro, 108R and Fisheye Auto-Pan |
| Video/ Record | | | | |
| Video Compression | | H.265/H.264/MJPEG | | H.265/H.264/MJPEG |
| Max. Decoding Capability | | H.264: 1920x1080 @ 690 fps H.265: 1920x1080 @ 450 fps | | H.264: 1920x1080 @ 690 fps H.265: 1920x1080 @ 450 fps |
| Decoding Resolution (Local) | | Up to 7680x2560 | | Up to 7680x2560 |
| Recording Throughput | | 768 Mbps | | 512 Mbps |
| Storage/ General | | | | |
| Hard Disk | | 3.5" SATA HDD*16 (Hot Swappable) | | 3.5" SATA HDD*8 (Hot Swappable) |
| RAID | | RAID 0, 1, 5, 6, 10, 50, 60 | | RAID 0, 1, 5, 6, 10, 50, 60 |
| Connectors | | 2.5 Gigabit Ethernet (RJ-45) x2 USB 2.0 x2, USB 3.2 x4 Microphone Audio Jack Input x1 3.5 Line Input Audio Jack x1 3.5 Line Output Audio Jack x1 | | 2.5 Gigabit Ethernet (RJ-45) x2 USB 2.0 x4, USB 3.2 x4 Microphone Audio Jack Input x1 3.5 Line Input Audio Jack x1 3.5 Line Output Audio Jack x1 |
| Power Input | | Redundant Power AC 100 ~ 240V | | Redundant Power AC 100 ~ 240V |
| Power Consumption | | Max. 920 W | | Max. 550 W |
| Installation, Management, and Maintenance | | VSS Pro, Shepherd | | VSS Pro, Shepherd |
| Dimensions | | 437 x 647 x 132 mm | | 437 x 533 x 89 mm |
| Advanced Features | | | | |
| Cybersecurity Management | | ● | | ● |
| Data Magnet | | ● | | ● |
| Failover | | ● | | ● |
| LPR Solution | | ● | | ● |
| Smart VCA Event | | ● | | ● |
| Deep Search | | ● | | ● |
| NDAA Compliance Product | | ● | | ● |

* All specifications are subject to change without notice.

PoE Network Products



PoE Network

PoE Network Products

A full range of products designed for video surveillance systems, including power-surge prevention from lightning strikes, network management, multiple topology views of cameras, and more.



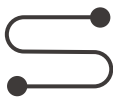
Network & PoE Management

- L2 Network Function
- PoE on/off Control for Each Port
- Cable Diagnostic



Industrial & Outdoor Ready

- Wide Temperature Support
- IP67 and IK10 Certified
- Built-in Surge Protection



Long Range PoE Extension

- 200~300m PoE Delivery
- Support Multiple Cameras with a Single Power Source
- Outdoor-ready Housing

Intuitively Managing IP Surveillance

Topology View

Map View

Device Management

[BACK TO CONTENTS](#)

Commercial Series



| | | | |
|--------------------|---|---|--|
| Model | AW-GEV-267A-370 | AW-GEV-104B-130 | AW-GEV-264B-370 |
| Type | VivoCam L2+ Managed PoE Switch | | VivoCam Web Smart Managed PoE Switch |
| Description | 24xGE PoE + 2xGE Combo + 1xRJ45 Console | 8xGE PoE + 2xGE SFP/ Per Port Max. 30W, Power Budget 130W | 24xGE PoE + 2xGE SFP/ Per Port Max. 30W, Power Budget 370W |



| | | | | |
|--------------------|--|--|--|--|
| Model | AW-GEL-065A-060 | AW-GEL-105A-110 | AW-GEL-205A-260 | AW-GEL-285A-380 |
| Type | Lite Managed PoE Switch | | | |
| Description | 4xGE PoE + 2xGE UTP / Per Port Max. 30W, Power Budget 60W / Extended PoE Mode 250m | 8xGE PoE + 1xGE UTP + 1xGE SFP / Port 1-2 Per Port Max. 90W bt, Port 3-8 Per Port Max. 30W, Power Budget 110W / Extended PoE Mode 250m | 16xGE PoE + 2xGE UTP + 2xGE SFP / Port 1-4 Per Port Max. 90W bt, Port 5-16 Per Port Max. 30W, Power Budget 260W / Extended PoE Mode 250m | 24xGE PoE + 2xGE UTP + 2xGE SFP / Port 1-4 Per Port Max. 90W bt, Port 5-24 Per Port Max. 30W, Power Budget 380W / Extended PoE Mode 250m |

* All specifications are subject to change without notice.



AW-GTS-287A



AW-FET-060C-065



AW-FGT-100D-120

| Model | AW-GTS-287A | AW-FET-060C-065 | AW-FGT-100D-120 |
|-------------|------------------------------------|------------------------|---|
| Type | 10G L2+ Managed Switch | | Unmanaged FE PoE Switch |
| Description | 20xGE SFP + 4xCombo GE + 4x10G SFP | | 4xFE PoE + 2xFE UTP Switch / Per Port Max. 30W, Power Budget 60W |
| | | | 8xFE PoE + 2xGE Combo Switch / Per Port Max. 30W, Power Budget 115W |



AW-FGT-180D-250



AW-FGT-260D-380



AP-GIC-011A-030



AP-GIC-011B-090

| Model | AW-FGT-180D-250 | AW-FGT-260D-380 | AP-GIC-011A-030 | AP-GIC-011B-090 |
|-------------|--|--|------------------------------|------------------------------|
| Type | Unmanaged GE PoE Switch | | PoE Injector | |
| Description | 16xFE PoE + 2xGE Combo/ Per Port Max. 30W, Power Budget 250W | 24xFE PoE + 2xGE Combo/ Per Port Max. 30W, Power Budget 370W | Indoor 1xGE IEEE 802.3at 30W | Indoor 1xGE IEEE 802.3bt 90W |

* All specifications are subject to change without notice.

Industrial Series



Model
AW-IHT-1271



Model
AW-IHB-0100



Model
AW-IHB-0400



Model
AW-IHB-0800

| Type | Industrial Vivocam L2+ Managed PoE Switch | | Industrial Unmanaged PoE Switch | |
|-------------|---|--|---|---|
| Description | Industrial 8xGE PoE +4xGE SFP/ Per Port Max. 30W, Power Budget 240W | Industrial 1xGE 802.3bt 90W PoE Injector | Industrial 2xGE 802.3 bt 90W PoE + 2xGE SFP/ Per Port Max. 90W, Power Budget 180W | Industrial 4xGE 802.3bt 90W PoE + 2xGE UTP + 2xGE SFP/ Per Port Max. 90W, Power Budget 360W |



Model
AW-IHT-0100



Model
AW-IHT-0601



Model
AW-IHT-0602



Model
AW-IHT-0800

| Type | Industrial Unmanaged PoE Switch | | | |
|-------------|----------------------------------|--|--|---|
| Description | Industrial 1xGE 30W PoE Injector | Industrial 4xGE PoE + 1xGE Combo + 1xGE SFP/ Per Port Max. 30W, Power Budget: 24V DC ~ 56V DC: 120 W, 12V DC: 65 W | Industrial EN50155 4xFE M12 PoE + 2xFE M12/ Per Port Max. 30W, Power Budget 120W | Industrial 4xGE PoE + 2xGE UTP + 2xGE SFP/ Per Port Max. 30W, Power Budget 120W |



Model
AW-IHT-1000



Model
AW-IHS-0202

| Type | Industrial Unmanaged PoE Switch | Industrial Media Converter |
|-------------|--|--|
| Description | Industrial 8xGE PoE + 2xGE SFP/ Per Port Max. 30W, Power Budget 240W | Industrial 1xFE + 1xFE SFP Media Converter |

* All specifications are subject to change without notice.

Long Range Solution



AP-GXC-0100



AP-GXC-0200



AP-GXC-0150



AP-GXC-0250

| Type | PoE Extender | | | |
|-------------|--|--|---|---|
| Description | Indoor 1-Port GE PoE Extender 15W/30W/60W/90W | Indoor 2-Port GE PoE Extender 15W/30W/60W/90W | Outdoor 1-Port GE PoE Extender 30W/60W/90W/95W, IP67, IK10 | Outdoor 2-Port GE PoE Extender 30W/60W/90W/95W, IP67, IK10 |

Outdoor Series



AW-GET-083A-120



AP-PSP-050

| Type | Outdoor Unmanaged PoE Switch | Outdoor PoE Surge Protector |
|-------------|--------------------------------|---|
| Description | 4xGE PoE + 2xGE UTP + 2xGE SFP | Outdoor PoE Surge Protector 16kV/IP67/IK10 |

* All specifications are subject to change without notice.

PoE Accessories



Model AT-CAB-001/AT-CAS-001



Model AT-CAB-002



Model AT-SUN-001



Model AT-SUN-002



Model AT-SWH-000

| Type | Cabinet | | Cabinet Accessories | | |
|-------------|---|--|-------------------------------------|---|------------------|
| Description | Cabinet/Cabinet for Speed dome (SD936X) | Side-mount Bracket for HLG Series Power Supply | Sunshield for AT-CAx Series Cabinet | Sunshield for AT-CAx + AT-CAB-002 Cabinet | Power Safety Kit |



Model AT-SWH-002



Model AT-PSP-001



Model AT-WPC-001/ AT-WPC-002



Model AM-314/ AM-414



Model MDR-10-12

| Type | Cabinet Accessories | | | | Industrial DIN-Rail Power Supply |
|-------------|----------------------------------|---------------------|--|----------------------------------|---|
| Description | Door Open/Close Detection Switch | PoE Surge Protector | M16 Cable Gland for 4~7mm AWG/ for Corrugated Tubing : 5/16" | Pole Mount/ Corner Mount Adapter | Indoor Industrial Din Rail, 12VDC/10W, -20°C ~ 70°C |



Model NDR-75-48



Model NDR-120-48/ NDR-240-48



Model DRL-48V120W1EN



Model DRL-48V240W1EN













Model HLG-60H-24

| Type | Industrial DIN-Rail Power Supply | | | | Industrial Wall Mount Power Supply |
|-------------|--|--|--|--|---|
| Description | Indoor Industrial Din Rail, 48~55VDC/75W, -20°C ~ 70°C | Indoor Industrial Din Rail, 48~55VDC/120W & 240W, -20°C ~ 70°C | Indoor Industrial DIN Rail, 43.2-52.8VDC/120W Out, -30°C to +70°C (-40°C Cold Start) | Indoor Industrial DIN Rail, 43.2-52.8VDC/240W Out, -30°C to +70°C (-40°C Cold Start) | Outdoor Industrial, 24VDC/60W, -40°C ~ 70°C, IP67 |

* All specifications are subject to change without notice.

| | | | | | |
|--------------------|---|---|---|---|---|
| |  |  |  |  |  |
| Model | HLG-80H-24/HLG-80H-48 | HLG-80H-54 | HLG-120H-24/HLG-120H-48 | HLG-120H-54 | HLG-240H-24/HLG-240H-54 |
| Type | Industrial Wall Mount Power Supply | | | | |
| Description | Outdoor Industrial, 24VDC/80W or 48VDC/80W, -40°C ~ 70°C, IP67 | Outdoor Industrial, 54VDC/80W, -40°C ~ 70°C, IP67 | Outdoor Industrial, 24VDC/120W or 48VDC/120W, -40°C ~ 70°C, IP67 | Outdoor Industrial, 54VDC/120W, -40°C ~ 70°C, IP67 | Outdoor Industrial, 24VDC/240W or 54VDC/240W, -40°C ~ 70°C, IP67 |

| | | | | | |
|--------------------|---|---|---|---|---|
| |  |  |  |  |  |
| Model | AA-352 | SFP-1000-MM85-X5 | SFP-1000-MM13-02 | SFP-1000-SM13-10/40 | SFP-1000-MM85-X5I |
| Type | Outdoor Power Box | SFP Transceiver | | | |
| Description | IP67, IK10, 24VAC/6A, -40°C ~ 60°C | 1.25G Multi-Mode SFP, 850nm, 0.5KM, 0°C ~ 70°C | 1.25G Multi-Mode SFP, LC, 1310nm, 2KM, 0°C ~ 70°C | 1.25G Single-Mode SFP, LC, 1310nm, 10KM or 40KM, 0°C ~ 70°C | Industrial 1.25G Multi-Mode SFP, LC, 850nm, 0.5KM, -40°C ~ 85°C |

| | | | | | |
|--------------------|---|---|---|---|---|
| |  |  |  |  |  |
| Model | SFP-1000-MM13-02I | SFP-1000-SM13-10I/40I | SFP-1000-CPTX-X1/X1I | SFP-2000-MM85-X3 | SFP-2000-SM13-10 |
| Type | SFP Transceiver | | | SFP+ Transceiver | |
| Description | Industrial 1.25G Multi-Mode SFP, LC, 1310nm, 2KM, -40°C ~ 85°C | Industrial 1.25G Single-Mode SFP, LC, 1310nm, 10KM/40KM, -40°C ~ 85°C | 1000BaseT, SFP to RJ45, 100M, 0°C ~ 70°C / -40°C ~ 85°C | 10G Multi-Mode SFP+, LC, 850nm, 0.3KM, 0°C ~ 70°C | 10G Single-Mode SFP+, LC, 1310nm, 10KM, 0°C ~ 70°C |

* All specifications are subject to change without notice.

Video Management Software

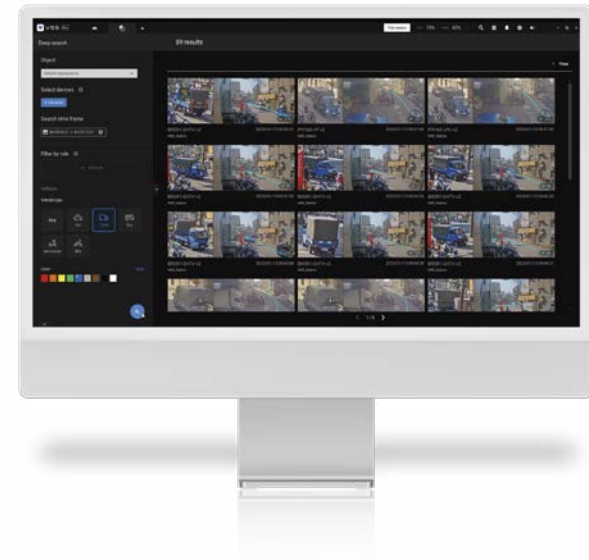
A Quick-to-set-up
A.I. Surveillance System



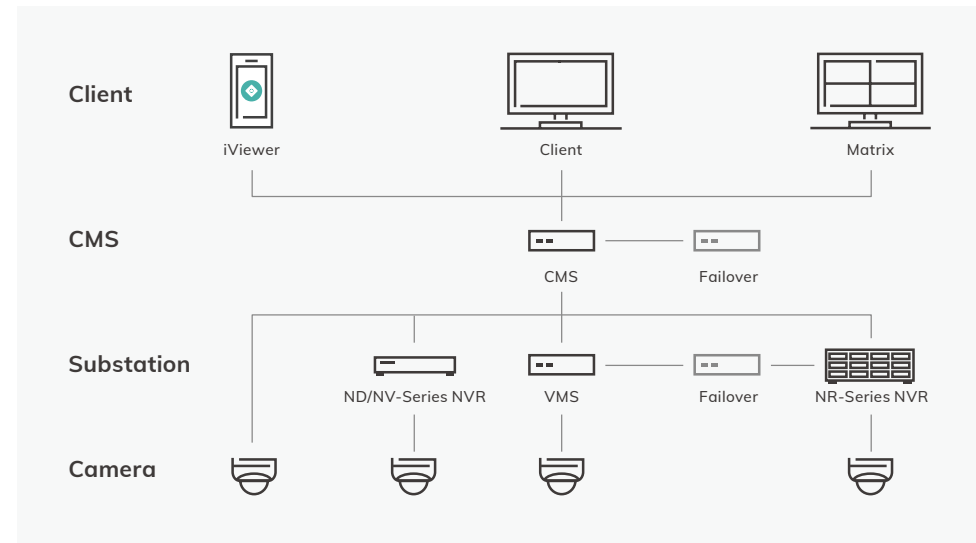
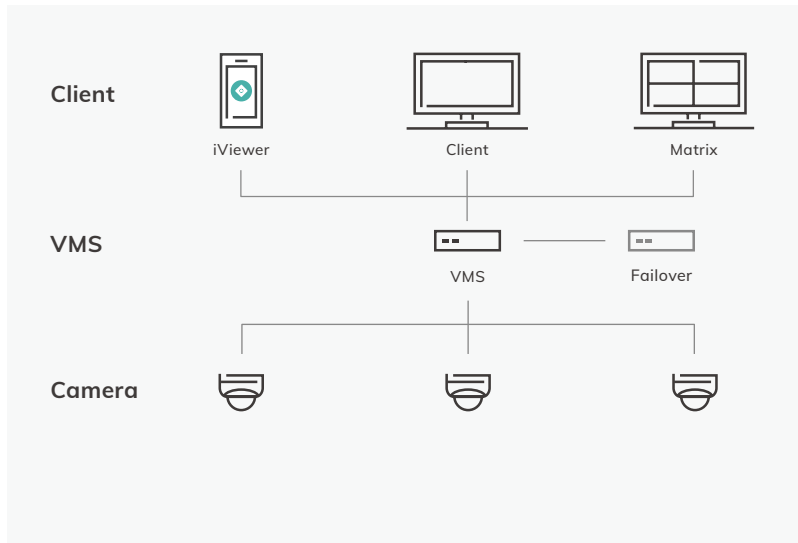
Video Management Software

VAST Security Station

VAST Security Station (VSS) is the next generation of VIVOTEK video management software. VSS expands the capabilities of previous VMS VAST 2, with newly added features including Enhanced User Defined Roles, Encrypted Video Recordings, and AI-based advanced post-event search function **Deep Search**. VSS is available in 3 different editions (Lite, Standard, Professional) to support security projects of all sizes, from small localized opportunities to multi-location enterprise operations.



VSS Architecture Overview



[BACK TO CONTENTS](#)



| Product Edition | VSS Lite | VSS Standard | VSS Professional |
|--|---|---|--|
| Product Overview | Free entry-level VMS for basic surveillance needs | Cost-effective solution for small and mid-size business | Designed for mid-size to large-scale projects requiring central management and 24/7 operations |
| Deployment | | | |
| Maximum Number of Cameras Per Server | 32 | 128 | 320 |
| Maximum Number of Clients Per Server | | 200 | |
| Maximum Number of Simultaneous Video Streaming Output Per Server | | 2048 | |
| Maximum Number of Substations Per System | 0 | 32 (ND9000/NV series NVR) | 700 (ND9000/NV series NVR, VSS Pro NR series NVR, VSS Professional Station) |
| Maximum Number of Cameras Per System | 32 | 128 | 22400 |
| Key Features | | | |
| Live view | ✓ | ✓ | ✓ |
| Recording | ✓ | ✓ | ✓ |
| Playback | ✓ | ✓ | ✓ |
| Backup | ✓ | ✓ | ✓ |
| Event | ✓ | ✓ | ✓ |
| Dashboard | ✓ | ✓ | ✓ |
| Alarms | - | ✓ | ✓ |
| E-map | - | ✓ | ✓ |
| VCA(Counting) Report | - | ✓ | ✓ |
| Video Wall (Matrix) | - | - | ✓ |
| Search | | | |
| Bookmark Search | ✓ | ✓ | ✓ |
| Event Search | ✓ | ✓ | ✓ |
| Alarm Search | - | ✓ | ✓ |
| Smart Search | - | ✓ | ✓ |
| Deep Search | Object Search | - | ✓ |
| | Attribute Search | - | ✓ |
| | Scene Search | - | ✓ |
| | Re-Search | - | - |

* All specifications are subject to change without notice.



| User Management | | | |
|---------------------------|--------------------------|------------------------------|---|
| User Role | Administrator | V | V |
| | Customizable | V | V |
| | User Pre-defined | - | - |
| Video Encryption | | | |
| Digital Watermark | V | V | V |
| Exported Video Encryption | - | V (AES-256 CTR) | V (AES-256 CTR) |
| Recording Encryption | - | - | V (AES-256 CTR) |
| Device Compatibility | | | |
| Camera | VIVOTEK 8000/9000 series | VIVOTEK 8000/9000 series | VIVOTEK 8000/9000 series |
| 3rd Party Video Source | - | ONVIF, RTSP | ONVIF, RTSP |
| Substation | - | VIVOTEK ND9000/NV series NVR | VIVOTEK ND9000/NV series NVR, VSS NR series NVR, VSS Professional Station |
| Joystick | - | V | V |
| Network Audio Device | - | V | V |
| Wiegand Converter | - | V | V |
| I/O Box | - | V | V |
| Access Control | - | V | V |
| Integration | | | |
| Data Magnet | - | V | V |
| TCP Message | - | V | V |
| Failover | | | |
| CMS Failover | - | - | V |
| Substation Failover | - | - | V |

Solution Integration Alliance

The SIA (Solution Integration Alliance) Program is a strategic alliance that aims to facilitate the integration of VIVOTEK products into leading software or hardware platforms. With the SIA Program, partners have the flexibility to enhance key functionalities when creating an IP surveillance solution. The SIA Program provides programmable Software Development Kits (SDK) to allow partners to develop customized features on an open platform, allowing the highest possible level of integration. VIVOTEK also provides technical support throughout the development process.

Find out more about enrolling in the VIVOTEK SIA Program, please email sia@vivotek.com for more information.



SIA



The Melint logo consists of a stylized 'M' symbol followed by the word 'ELINT' in a bold, sans-serif font. The entire logo is white and is set against a solid red rectangular background.

MELINT, official distributor

CONTACT US

NORTH AFRICA OFFICE :

Ville Verte, Ouled ben amer RP 3011 k6, Casablanca,
Showroom: Casanearshore, Shore 1, 1100
Bd Al Quods, PO BOX 20270 Casablanca, Morocco.
Tel : +212 (0)522 012 928 / +212 (0)529 044 345
Fax : +212 (0)529 044 201 / +212 (0)529 044 201

www.melint.com